



NOTICE OF INVITATION TO TENDER for Local SMME's

Africa Pipe Industries who are the main Contractor under contract **BFI01/24/MBPS, Manufacture, Supply and Delivery of Bulk 1200ND Steel Pipeline Material for Projects MBSC1 & MBSC6** hereby invites all suitable Sub-Contractors located in the wards of Sol Plaatjes Municipality to submit all relevant documents as set out below.

Scope of Work – Pipe Storage Yard near Riverton as indicated on attached drawing

- WP01 - Cutting of grass within the storage yard
- WP02 - Gravel access road and roads inside pipe storage yard
- WP03 - Fencing of Storage area
- WP04 - Supply of Sandbags
- WP05 - Security

The scope of work is not set out as a whole, it is divided into portions (Work Packages) to accommodate more SMME's and to broaden the possibility to uplift and develop more SMME's. The Contractor and Consultant will assess all the interested SMME's and divide and allocate the work accordingly to make the most suitable impact and empower the most SMME's, including doing Enterprise Development.

Each of the above Work Packages must be priced separately and the following BoQ's must be completed for each package:

- Schedule 1 – P&G's
- Schedule 2 – Provision Sums
- Schedule 3 – Specific Work as set out under Scope of Work

Mandatory Documents Needed with submission

- Proof of Residence (Ward number and Counsellor Details also indicated)
- CSD Registered (Proof attached)
- CIDB Registered (Proof attached)
- Letter of Good standing
- Valid SARS compliance Certificate
- Owners ID's must be attached, only South African Residents
- COIDA must be attached
- PSiRA Registered (Proof attached)
- Complete Company profile, including relevant previous experience.

SUBMISSION

Site visit at the designated site, assembly point at Riverton Soccer field will be held on the **12th of June 2025 at 10h00** where the Consultant will also provide clarity on how the tenders should be priced.

All submissions must be submitted by the **19th of June 2025 at 12h00** with all Work Package's schedules fully priced.

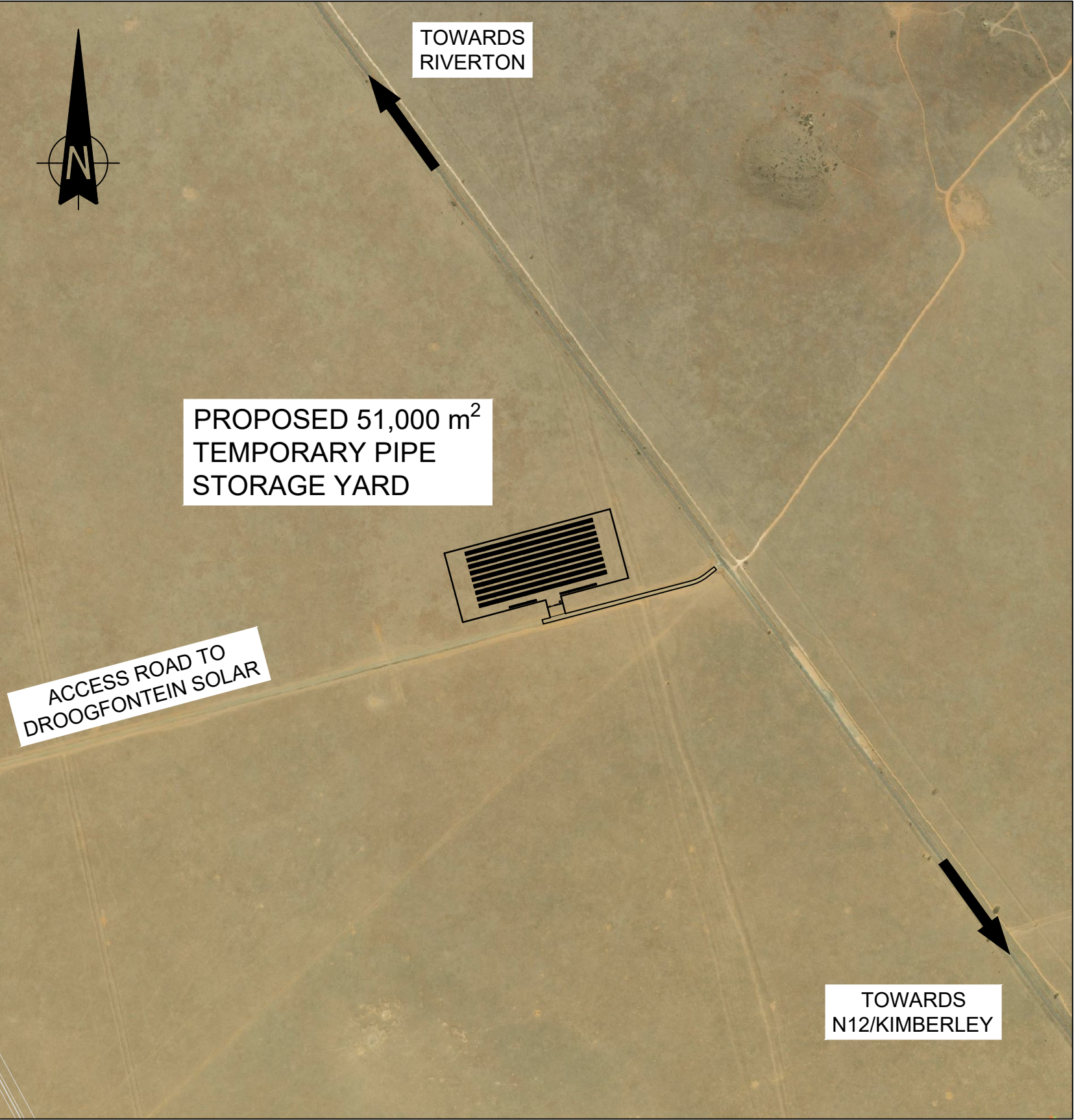
Emailed company profiles with the subject line clearly indicated ***"Invitation to Tender for BFI01/24/MBPS, Manufacture, Supply and Delivery of Bulk 1200ND Steel Pipeline Material for Projects MBSC1 & MBSC6: Work Package Description"*** when being emailed.

The names and address of the bidder must be clearly indicated on the company profile and on the company documents to be submitted.

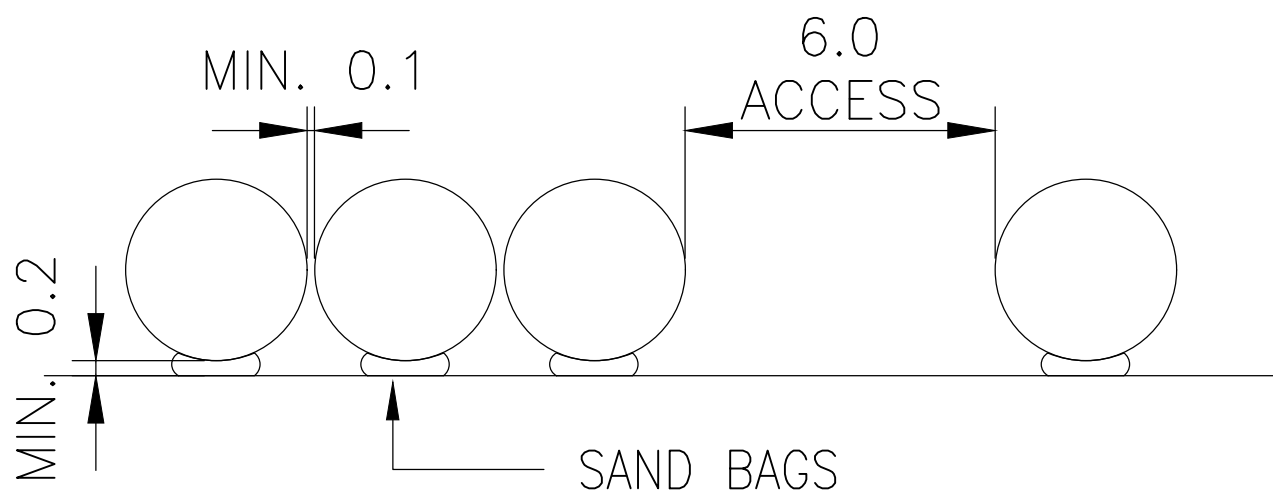
All submissions to be emailed to: African Pipe Industries Contract Manager – Mr. Cobus van der Merwe

Bigen Group Assistant Representative Engineer – Mr. Jaco Thuynsma

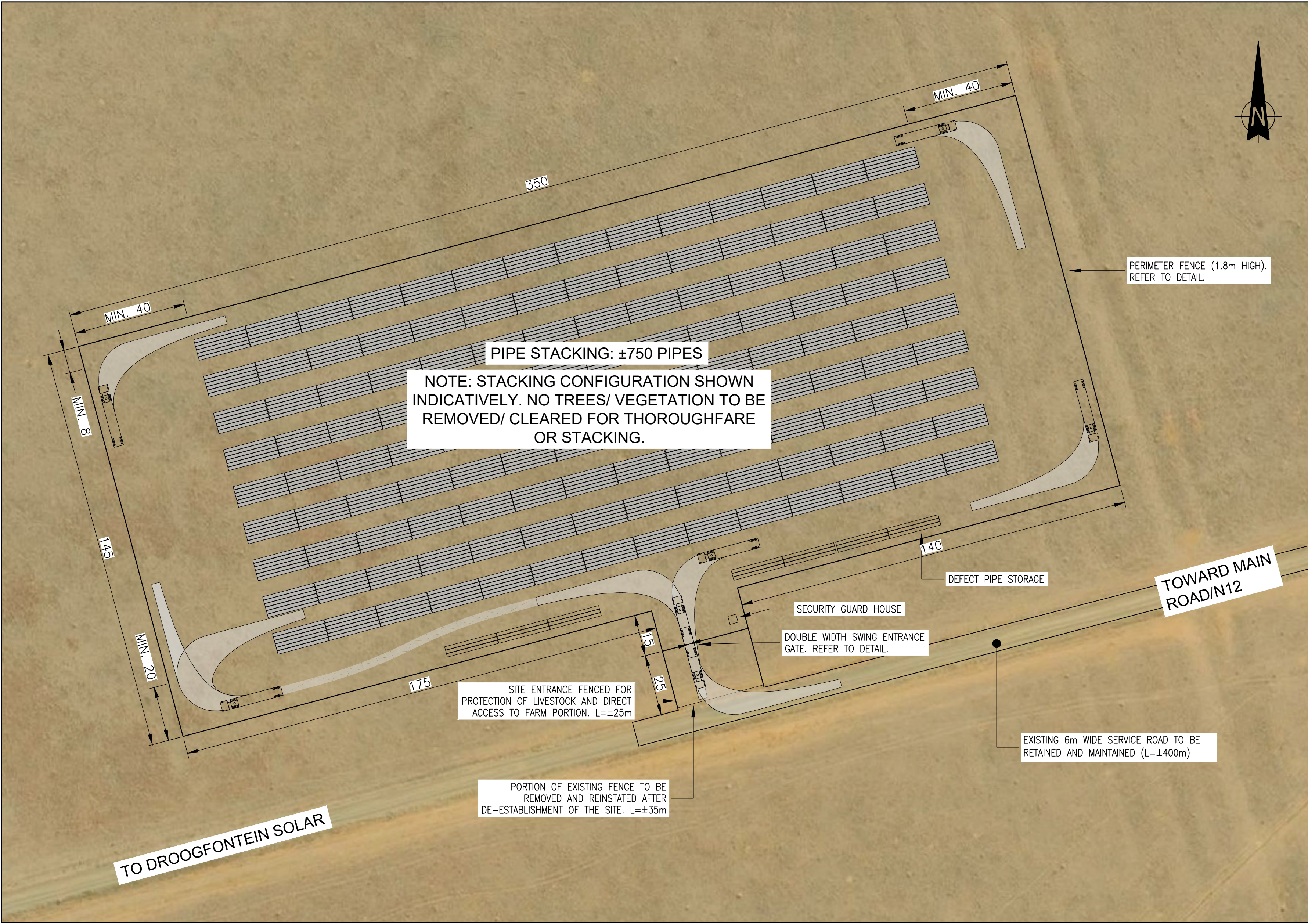
Email: cobus@africapipe.co.za , Jaco.Thuynsma@bigengroup.com



KEY REFERENCE PLAN
(NOT TO SCALE)



- GENERAL NOTES:
1. PIPE STORAGE SHALL BE ACCORDING TO THE PIPE MANUFACTURERS "PIPE STORAGE METHOD STATEMENT", IN ACCORDANCE WITH THE 'PARTICULAR SPECIFICATION PLN'.
 2. PIPE STACKING CONFIGURATION SHOWN INDICATIVELY FOR STACKING OF ±750 1200Ø PIPES (19m LENGTHS)..
 3. STACKING CONFIGURATION DEPENDANT ON DELIVERY TRUCK CAPACITY. SUFFICIENT TURNING SPACE MUST BE PROVIDED FOR EASE OF MOVEMENT WITHIN THE SITE FOR TRUCKS, CRANES AND NECESSARY PLANT.
 4. PROVISION MUST BE MADE FOR DEFECTIVE PIPES TO BE RETURNED TO THE MANUFACTURER.
 5. ALL PIPES TO BE COVERED WITH UV SHADE NETTING TO PROTECT THE EXTERNAL COATING OF THE PIPES.
 6. CLEARANCE OF VEGETATION AS PART OF SITE ESTABLISHMENT SHALL BE KEPT TO A MINIMUM.
 7. FOLLOWING REMOVAL OF THE PIPES FROM THE SITE, THE SITE SHALL BE REHABILITATED TO ITS ORIGINAL CONDITION.



SITE PLAN
(NOT TO SCALE)

VERSION			
No.	DATE	DESCRIPTION	AUTH. BY
1.	FEB 25	FOR TENDER	RA MOFFAT
SURVEY DATUM:			

www.bigengroup.com

Block B
Bellevue Campus
5 Bellevue Road
Kloof

Phone: + 27 (0) 31 171 2571
durban@bigengroup.com



PROJECT TITLE:

**SOL PLAATJE INTEGRATED BULK
WATER SUPPLY SYSTEM INTERVENTION**

DRAWING TITLE:

**PROPOSED TEMPORARY PIPE
STORAGE YARD (DROOGFONTEIN)**



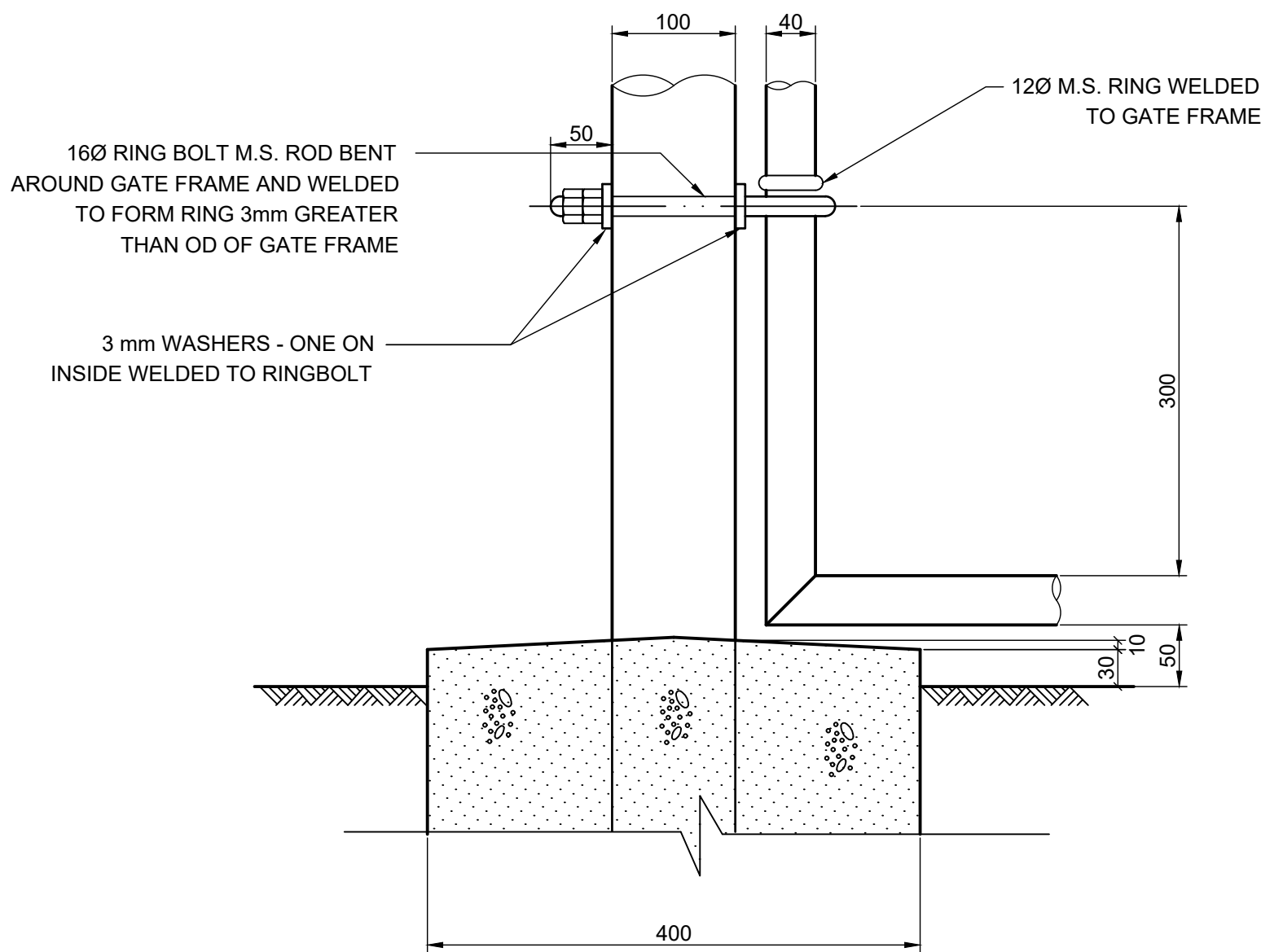
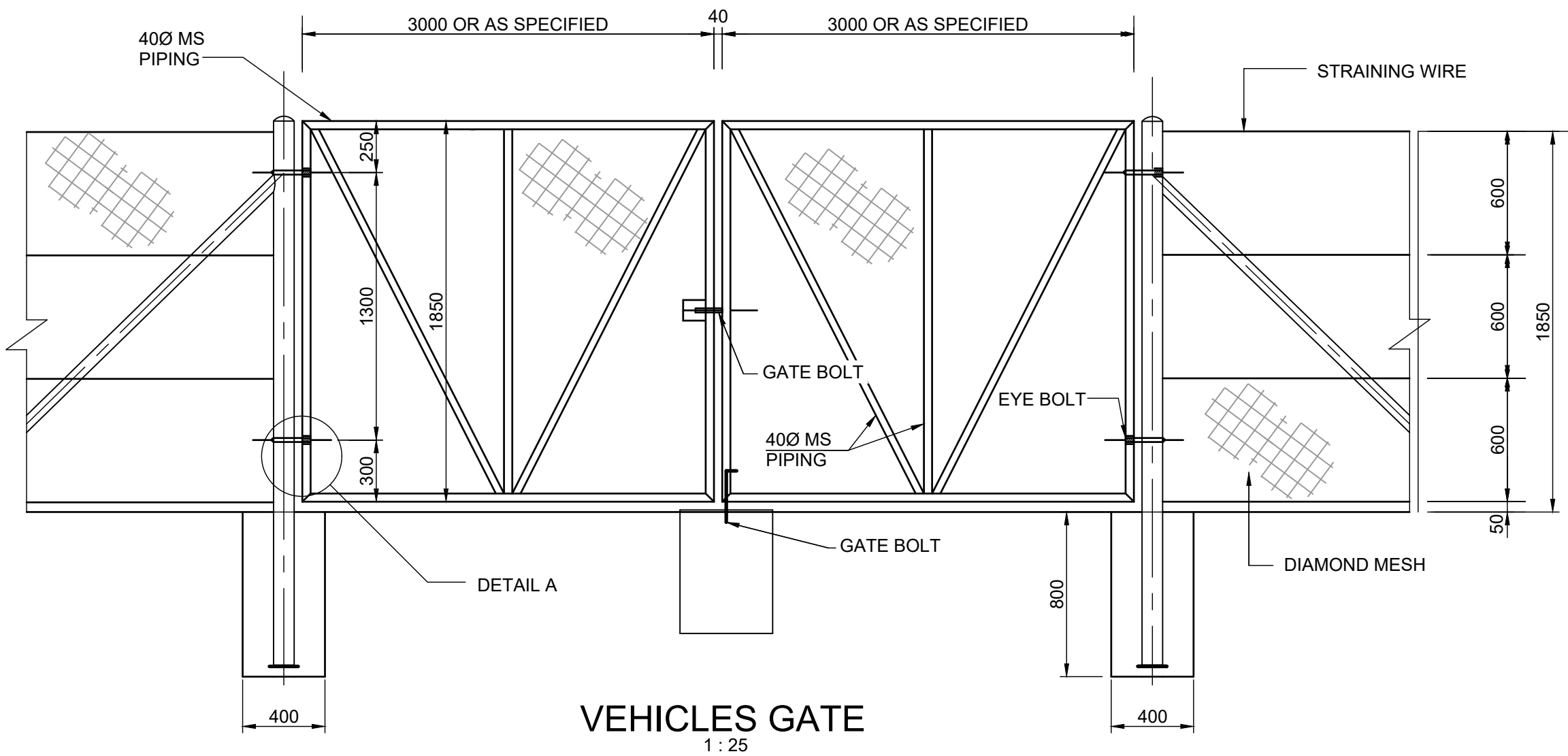
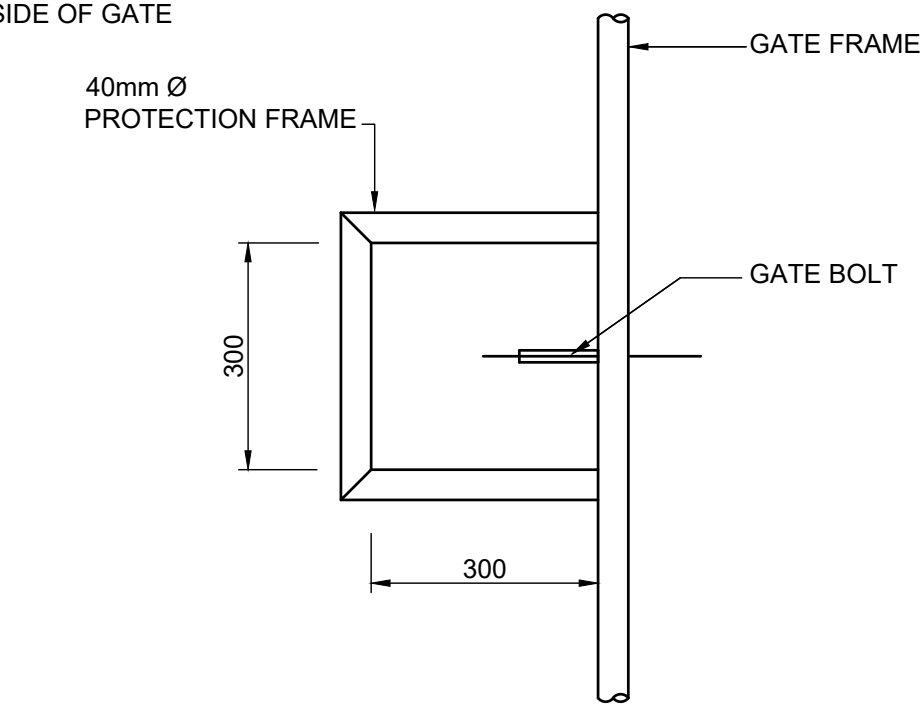
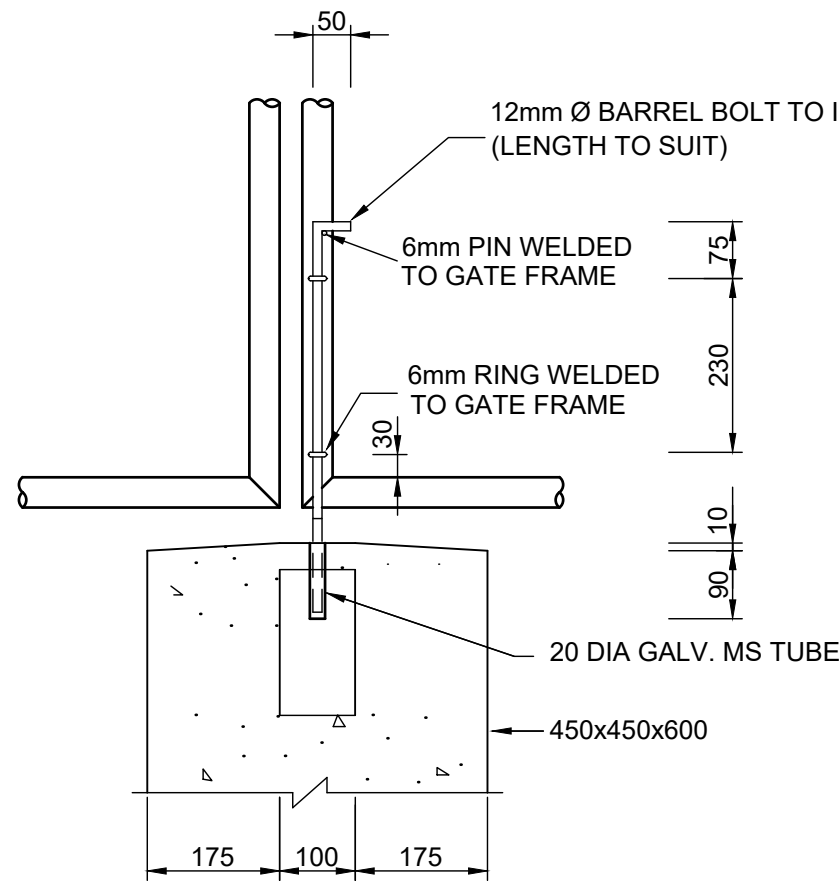
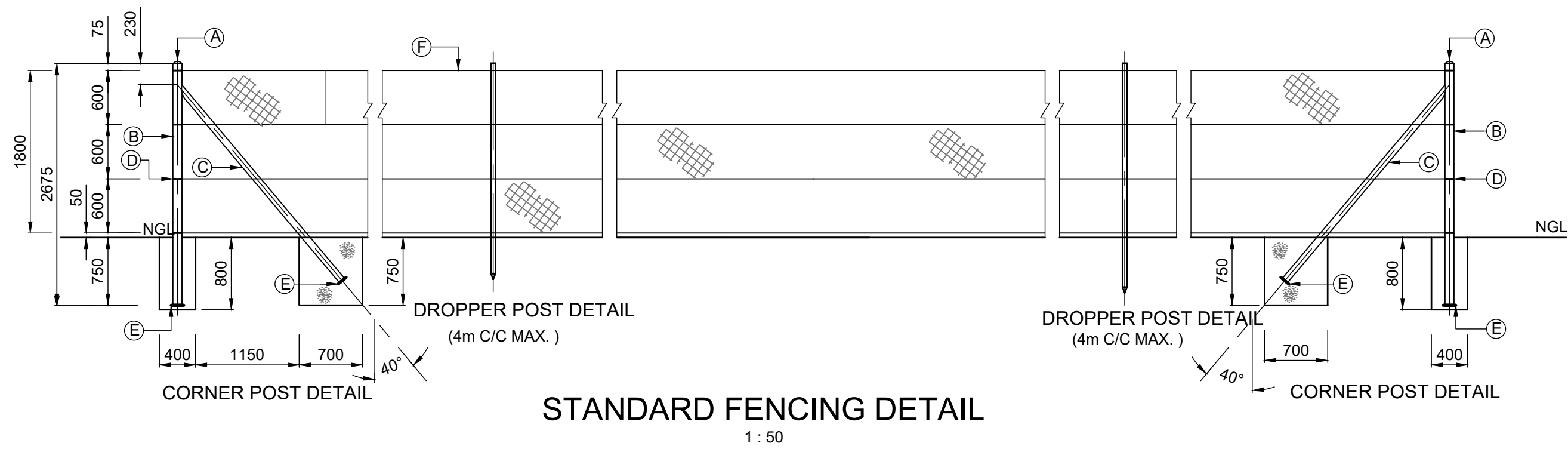
0 50 100 100mm ON ORIGINAL DRAWING	
ORIGINAL DRAWING SCALE: NTS	ORIGINAL DRAWING SHEET SIZE: A1
APPROVED ON BEHALF OF CLIENT:	
NAME:	
DATE:	
CLIENT DRAWING No.:	CLIENT REF No.:

SURVEYED	DESIGNED	DJ MULLER
DRAWN	DJ MULLER	
COORD SYSTEM	DATE	FEBRUARY 2025
APPROVED ON BEHALF OF BIGEN:		
DRAWING No.:	VERSION:	
3338.17.00.AAZ.10.U001	1.0	

3338.17.00.AAZ.10.U001

LEGEND

- A. 4mm PLATE PRESSED STEEL END CAP
B. 114mm O.D X 3.5mm WALL THICKNESS X 9.9Kg/m PIPE
C. 88mm O.D X 3.0 mm X 6.8 Kg/m PIPE, 2.8m LONG
D. 10mm DIAMETER HOLES
E. 200 X 200 X 5mm THICK BASE PLATES
F. STRAIN WIRE TO BE 4mm DIAMETER MILD STEEL OR 2mm DIAMETER HIGH TENSILE STEEL



POLES

GATE, BEND, END AND CORNER POSTS

- LENGTH : 2,675m
SECTION : Ø114 OD x 3,5 WALL THICKNESS x 9,9 kg/m MILD STEEL PIPE
BASE PLATE : 200 x 200 x 5 PLATE

STRUTS

- LENGTH : 2,800m
SECTION : Ø88 OD x 3,0 WALL THICKNESS x 6,8 kg/m MILD STEEL
BASE PLATE : 200 x 200 x 5 PLATE

DROPPER POSTS

- LENGTH : 2,500m
SECTION : ROLLED STEEL Y POST x 3,0 kg/m

SPACING

- DROPPER POSTS : AT MAX. 4m EVENLY SPACED BETWEEN STRUTTED POSTS

FINISH

- STEEL POSTS AND STRUTS : COLD GALVANISED
STEEL DROPPER POSTS : STANDARD COMMERCIAL BLACK PAINT

ALL POLES AND DROPPER POSTS TO BE TOUCHED UP AFTER DRILLING OF HOLES AND AFTER COMPLETE ERECTION OF FENCING

GENERAL

1. ALL STEEL POLES AND STANDARDS TO BE IN ACCORDANCE WITH SABS STANDARDS
2. ALL STEEL POSTS SHALL BE DRILLED
3. ALL BASE PLATES TO BE WELDED ALL ROUND TO POSTS AND STRUTS
4. ALL PIPE SECTIONS TO BE FITTED WITH PRESSED STEEL END CAPS AT TOP

GATES

1. GALVANISED MILD STEEL CONSTRUCTION. MEMBERS AND CONFIGURATION AS SPECIFIED
2. WHERE DETAIL NOT INDICATED ON THIS PLAN, CONSTRUCTION TO BE IN ACCORDANCE WITH SABS STANDARDS
3. ALL JOINTS TO BE WELDED ALL ROUND CONSTRUCTION

WIRE

GENERAL

1. ALL WIRE TO BE GALVANISED WIRE IN ACCORDANCE TO SABS STANDARDS, ZINC COATED FENCING WIRE WITH CLASS C (LIGHT) ZINC COATING

STRAIN WIRE

- 4 DIA MILD STEEL OR
- 2 DIA HIGH TENSILE STEEL

DIAMOND MESH

1. 1.8 HIGH x 2,0mm x 75mm GALVANISED DIAMOND MESH (CHAIN LINK WIRE FENCING) TO SABS STANDARDS
2. MESH TO BE TIED TO STRAIN WIRES AT MAX. 1,5m INTERVALS

BLINDING WIRE

- 2,0 DIAMETER

PAINTING

ALL UNGALVANISED STEEL WORK OR DAMAGED GALVANISED STEELWORK TO BE TREATED AS FOLLOWS:
AFTER FABRICATION STEEL WORK TO BE THOROUGHLY CLEANED, FREE FROM RUST AND SCALE AND PAINTED : ONE COAT RED LEAD PRIMER TO SABS STANDARDS AND ONE COAT ALUMINIUM FINISHING PAINT TO SABS 682 GRADE I. AFTER ERECTION PAINT, ONE COAT ALUMINIUM FINISH PAINT TO SABS STANDARDS

VERSION			
No.	DATE	DESCRIPTION	AUTH. BY
SURVEY DATUM:			

www.bigengroup.com

Allan Cornack Street
The Innovation Hub
Perseus
Pretoria

Phone: + 27 (0) 12 842 8700
pretoria@bigengroup.com



PROJECT TITLE:
SOL PLAATJE INTEGRATED BULK WATER SUPPLY SYSTEM INTERVENTION

DRAWING TITLE:
TYPICAL 1.8m HIGH DIAMOND MESH FENCE AND GATE DETAILS

Sol Plaatje Municipality



0 50 100
100mm ON ORIGINAL DRAWING

ORIGINAL DRAWING SCALE: AS SHOWN ORIGINAL DRAWING SHEET SIZE: A1

APPROVED ON BEHALF OF CLIENT:
NAME:
DATE:
CLIENT DRAWING No.: CLIENT REF No.:

SURVEYED	-	DESIGNED	D KATSKY
DRAWN	A STEENBERG	DATE	JANUARY 2025
COORD SYSTEM	WG25	DATE	JANUARY 2025
APPROVED ON BEHALF OF BIGEN:			
FRACITIONER:	REVIEWER:		
DRAWING No.:	3338.22.00.GZA.17.D001		VERSION: A

3338.22.00.GZA.17.D001



SITE CLEARANCE FOR PIPE STORAGE YARD
Summary of Schedules

Schedule No.	Description	Amount (R)
1	PRELIMINARY AND GENERAL	
2	PROVISIONAL SUMS	
3	SITE CLEARANCE	
Total Construction Cost		
Value Added Tax at 15%		
Total Amount of Tender Carried Forward to Form of Bid		

Contractor Details :

Contractor's Name: _____

Company Registration Number: _____

Adres: _____

Contact Person:

Cell Number: _____

Email: _____

Signature :

By Tenderer : _____

Company Name : _____

Date : _____

Item	Payment Reference	Description	Unit	Qty	Rate (R)	Amount (R)
1		Schedule No. 1 Preliminary and General				
	SANS 1200A	FIXED-CHARGE ITEMS				
	8,3	<u>Fixed-charge Items</u>				
1.1	8.3.1	.1 Contractual Requirements (Fixed)	sum	1		-
		.2 Establishment of Facilities on Site				
	8.3.2	(a) Facilities for the Contractor				
1.2		.1 Storage sheds	sum	1		-
1.3		.2 Tools and Equipment	sum	1		-
1.4		.3 Construction Equipment	sum	1		-
	8.3.3	.3 Other Fixed-charge Obligations, Specify:				
1.5		.1	sum	1		-
1.6		.2	sum	1		-
1.7	8.3.4	.4 Removal of Contractors Facilities on Completion	sum	1		-
		.5 Occupational Health and Safety				
1.8	8.3.5	(a) Compliance with Occupational Health and Safety Act (Act 85 of 1993) and its regulations and with the Employers Health and Safety Specification.	sum	1		-
		.6 Environmental Management				
1.9	8.3.6	(a) Compliance with Environmental Management Plan	sum	1		-
		TIME-RELATED ITEMS				
	8,4	<u>Time Related Items</u>				
1.10	8.4.1	.1 Contractual Requirements (Time-related)	sum	1		-
		.2 Operation and maintenace of Contractors facilities on the Site for the duration of the contract				
	8.4.2	(a) Facilities for the Contractor				
1.11		.1 Storage sheds	sum	1		-
1.12		.2 Tools and Equipment	sum	1		-
1.13		.3 Construction Equipment	sum	1		-
	8.4.5	.3 Other Fixed-charge Obligations, Specify:				
1.14		.1	sum	1		-
1.15		.2	sum	1		-
Carried Forward to Next Page						-

Contractor

Witness 1

Witness 2

Employer

Witness 1

Witness 2



Item	Payment Reference	Description	Unit	Qty	Rate (R)	Amount (R)
Brought Forward from Previous Page						-
1.16	8.4.3	.4 Supervision for duration of the contract	sum	1		-
1.17	8.4.4	.5 Company and Head Office Overheads	sum	1		-
		.6 Occupational Health and Safety				
1.18	8.4.6	(a) Compliance with Occupational Health and Safety Act (Act 85 of 1993) and its regulations and with the Employers Health and Safety Specification.	sum	1		-
		.7 Environmental Management				
1.19	8.4.7	(a) Compliance with Environmental Management Plan	sum	1		-
Total: Schedule No. 1 Preliminary and General						
Total Carried Forward to Summary of Schedules						-

Contractor

Witness 1

Witness 2

Employer

Witness 1

Witness 2

Item	Payment Reference	Description	Unit	Qty	Rate (R)	Amount (R)
2		Schedule No. 2 Provisional Sums				
	SANS 1200A 8,5	PROVISIONAL SUMS				
		<u>Provisional Sum Allowances</u>				
2.1		.1 General allowance as instructed by the Engineer	P.Sum	1	20 000,00	20 000,00
2.2		(a) Overheads, charges and profit on (.1) above	10%			2 000,00
Total: Schedule No. 2 Provisional Sums						
Total Carried Forward to Summary of Schedules						22 000,00

Contractor

Witness 1

Witness 2

Employer

Witness 1

Witness 2



Item	Payment Reference	Description	Unit	Qty	Rate (R)	Amount (R)
3		Schedule No. 3 Site Clearance				
	SANS 1200C	NEW FENCING MEASURED ALL INCLUSIVE				
		Clear Site				
	8.2.1	Cutting of grass				
		.1 Before contstruction				
3.1		(a) Storage Area	m²	52150		-
		.2 Maintaining of short grass between pipes (Twice month)				
3.2		(a) Storage Area	no	12		-
		Total: Schedule No. 3 Site Clearance				
Total Carried Forward to Summary of Schedules						-

Contractor

Witness 1

Witness 2

Employer

Witness 1

Witness 2



**ROAD FOR PIPE STORAGE YARD
 Summary of Schedules**

Schedule No.	Description	Amount (R)
1	PRELIMINARY AND GENERAL	
2	PROVISIONAL SUMS	
3	ROADS	
Total Construction Cost		
Value Added Tax at 15%		
Total Amount of Tender Carried Forward to Form of Bid		

Contractor Details :

Contractor's Name: _____

Company Registration Number: _____

Adres: _____

Contact Person:

Cell Number: _____

Email: _____

Signature :

By Tenderer : _____

Company Name : _____

Date : _____

Item	Payment Reference	Description	Unit	Qty	Rate (R)	Amount (R)
1		Schedule No. 1 Preliminary and General				
	SANS 1200A	FIXED-CHARGE ITEMS				
	8,3	<u>Fixed-charge Items</u>				
1.1	8.3.1	.1 Contractual Requirements (Fixed)	sum	1		-
		.2 Establishment of Facilities on Site				
	8.3.2	(a) Facilities for the Contractor				
1.2		.1 Storage sheds	sum	1		-
1.3		.2 Tools and Equipment	sum	1		-
1.4		.3 Construction Equipment	sum	1		-
	8.3.3	.3 Other Fixed-charge Obligations, Specify:				
1.5		.1	sum	1		-
1.6		.2	sum	1		-
1.7	8.3.4	.4 Removal of Contractors Facilities on Completion	sum	1		-
		.5 Occupational Health and Safety				
1.8	8.3.5	(a) Compliance with Occupational Health and Safety Act (Act 85 of 1993) and its regulations and with the Employers Health and Safety Specification.	sum	1		-
		.6 Environmental Management				
1.9	8.3.6	(a) Compliance with Environmental Management Plan	sum	1		-
		TIME-RELATED ITEMS				
	8,4	<u>Time Related Items</u>				
1.10	8.4.1	.1 Contractual Requirements (Time-related)	sum	1		-
		.2 Operation and maintenace of Contractors facilities on the Site for the duration of the contract				
	8.4.2	(a) Facilities for the Contractor				
1.11		.1 Storage sheds	sum	1		-
1.12		.2 Tools and Equipment	sum	1		-
1.13		.3 Construction Equipment	sum	1		-
	8.4.5	.3 Other Fixed-charge Obligations, Specify:				
1.14		.1	sum	1		-
1.15		.2	sum	1		-
Carried Forward to Next Page						-

Contractor

Witness 1

Witness 2

Employer

Witness 1

Witness 2



Item	Payment Reference	Description	Unit	Qty	Rate (R)	Amount (R)
Brought Forward from Previous Page						-
1.16	8.4.3	.4 Supervision for duration of the contract	sum	1		-
1.17	8.4.4	.5 Company and Head Office Overheads	sum	1		-
		.6 Occupational Health and Safety				
1.18	8.4.6	(a) Compliance with Occupational Health and Safety Act (Act 85 of 1993) and its regulations and with the Employers Health and Safety Specification.	sum	1		-
		.7 Environmental Management				
1.19	8.4.7	(a) Compliance with Environmental Management Plan	sum	1		-
Total: Schedule No. 1 Preliminary and General						
Total Carried Forward to Summary of Schedules						-

Contractor

Witness 1

Witness 2

Employer

Witness 1

Witness 2



Item	Payment Reference	Description	Unit	Qty	Rate (R)	Amount (R)
2		Schedule No. 2 Provisional Sums				
	SANS 1200A 8,5	PROVISIONAL SUMS				
		Provisional Sum Allowances				
2.1		.1 Accomodation of traffic (Warning/Road signage)	P.Sum	1	20 000,00	20 000,00
2.2		(a) Overheads, charges and profit on (.1) above	%			2 000,00
2.3		.2 General allowance as instructed by the Engineer	P.Sum	1	30 000,00	30 000,00
2.4		(a) Overheads, charges and profit on (.2) above	%			3 000,00
		Total: Schedule No. 2 Provisional Sums				
Total Carried Forward to Summary of Schedules						55 000,00

Contractor

Witness 1

Witness 2

Employer

Witness 1

Witness 2

2025/06/09

Item	Payment Reference	Description	Unit	Qty	Rate (R)	Amount (R)
3		Schedule No. 3 Roads				
	SANS 1200DM	ACCESS ROADS AND INTERNAL ROADS				
		<u>Import Material from Commercial Sources</u>				
		<u>Import of material from local commercial source and stockpile on site as designated by the Engineer.</u>				
		.1 <u>Road surface material</u>				
3.1		(a) G5 selected material	m ³	4968		-
3.2		(b) G3 selected material	m ³	360		-
		<u>Use Stockpile material to spread over site</u>				
		<u>Use material from stockpile and spread over site for layerworks.</u>				
		.1 <u>Road surface material</u>				
3.3		(a) G5 selected material	m ³	4968		-
3.4		(b) G3 selected material	m ³	360		-
		<u>Construct layerworks with stockpile/spread material</u>				
		<u>Use material from stockpile/spread material to construct layerworks of roads for:</u>				
		.1 <u>External access roads</u>				
3.5		(a) G5 selected material, 150mm Thick, Compacted to 93% mod AASHTO	m ³	360		-
3.6		(b) G3 selected material, 150mm Thick, Compacted to 93% mod AASHTO	m ³	360		-
		.2 <u>Internal access roads</u>				
3.7		(a) G5 selected material, 100mm Thick, Compacted to 93% mod AASHTO	m ³	2304		-
3.8		(b) G5 selected material, 200mm Thick, Compacted to 93% mod AASHTO	m ³	2304		-
		ROAD MAINTENANCE				
		<u>Light Blading</u>				
		<u>Light blading (i.e., 50mm depth) by road grader for:</u>				
		.1 <u>Existing/External access roads (5m width)</u>				
3.9		(a) Light blading single pass	km/pass			
Carried Forward to Next Page						-

Contractor

Witness 1

Witness 2

Employer

Witness 1

Witness 2

Item	Payment Reference	Description	Unit	Qty	Rate (R)	Amount (R)
Brought Forward from Previous Page						-
3.10		.2 Internal access/thoroughfare roads (Varying widths) (a) Light blading single pass	km/pass			
		Heavy Blading to Windrow <u>Materials bladed to windrow, maintain, including placing back later (construction and compaction of layerworks measured elsewhere)</u>				
3.11	8.3.10	.1 Existing/External access roads (5m width) (a) Blading to windrow single pass	m ³			
		Layerworks from In-situ Windrowed Material				
	8.3.5	Construct layerworks from windrowed material (Item 3.11) for:				
3.12		.1 Access roads (a) 150mm Thick, compacted to 93% Mod AASHTO	m ³			
		Ad-hoc Road Maintenance <u>Use material from stockpile to undertake ad-hoc pothole repair on access roads, using labour intensive methods (i.e., using brooms and rakes to clear out loose material from ruts and potholes, filling of holes and compacting using plate compactors), as required and instructed by the Engineer.</u>				
3.13		.1 In all road (gravel) materials for: (a) Existing/external and internal access roads	m ³			
		Dust Suppression <u>Provide dust suppression on external and internal roads in line with the pipe delivery schedules, i.e., when deliveries are anticipated to take place.</u>				
3.14		.1 In all road (gravel) materials for: (a) Existing/external and internal access roads	m			
		SUNDRIES				
		Stockpile Excess Material for Re-use or Spoil <u>Stockpile neatly on the site, at a location indicated by the Engineer, excess material, originating from the maintenance processes described above, for re-use as part of the pipe construction contract.</u>				
3.15		.1 All road (gravel) materials for: (a) All access roads	m ³			
Carried Forward to Next Page						-

Contractor

Witness 1

Witness 2

Employer

Witness 1

Witness 2

Item	Payment Reference	Description	Unit	Qty	Rate (R)	Amount (R)
Brought Forward from Previous Page						-
3.16		<u>Extra-over above for the spoil of stockpiled excess material.</u> .1 <u>All road (gravel) materials for:</u> (a) All access roads	m ³ .km			
		GRAVEL ROAD REHABILITATION/CONSTRUCTION				
3.17		<u>Heavy Blading to Windrow</u> <u>Heavy blading (i.e., 75mm depth) by road grader for:</u> .1 <u>Existing/External access roads (5m width)</u> (a) Heavy blading single pass	km/pass	R/O		Rate Only
3.18		.2 <u>Stockpile of Windrow material as "excess material"</u> (a) All road (gravel) materials	m ³	R/O		Rate Only
3.19		<u>Construct layerworks with commercial material supplied by the contractor</u> .1 <u>All gravel access roads in G3 selected material, compacted to 93% Mod ASHTO density for:</u> (a) 150mm Thick layer	m ³	R/O		Rate Only
		Total: Schedule No. 3 Roads				
Total Carried Forward to Summary of Schedules						-

Contractor

Witness 1

Witness 2

Employer

Witness 1

Witness 2

Contract No.: BFI01/24/MBPS - Manufacture, Supply & Delivery of Bulk 1200ND Steel Pipes
Part C2: Pricing Data
Section C2.2: Bill of Quantities

#VALUE!

FENCING FOR PIPE STORAGE YARD
Summary of Schedules

Schedule No.	Description	Amount (R)
1	PRELIMINARY AND GENERAL	
2	PROVISIONAL SUMS	
3	FENCING	
Total Construction Cost		
Value Added Tax at 15%		
Total Amount of Tender Carried Forward to Form of Bid		

Contractor Details :

Contractor's Name: _____

Company Registration Number: _____

Adres: _____

Contact Person:

Cell Number: _____

Email: _____

Signature :

By Tenderer : _____

Company Name : _____

Date : _____

Item	Payment Reference	Description	Unit	Qty	Rate (R)	Amount (R)
1		Schedule No. 1 Preliminary and General				
	SANS 1200A	FIXED-CHARGE ITEMS				
	8,3	<u>Fixed-charge Items</u>				
1.1	8.3.1	.1 Contractual Requirements (Fixed)	sum	1		-
		.2 Establishment of Facilities on Site				
	8.3.2	(a) Facilities for the Contractor				
1.2		.1 Storage sheds	sum	1		-
1.3		.2 Tools and Equipment	sum	1		-
1.4		.3 Construction Equipment	sum	1		-
	8.3.3	.3 Other Fixed-charge Obligations, Specify:				
1.5		.1	sum	1		-
1.6		.2	sum	1		-
1.7	8.3.4	.4 Removal of Contractors Facilities on Completion	sum	1		-
		.5 Occupational Health and Safety				
1.8	8.3.5	(a) Compliance with Occupational Health and Safety Act (Act 85 of 1993) and its regulations and with the Employers Health and Safety Specification.	sum	1		-
		.6 Environmental Management				
1.9	8.3.6	(a) Compliance with Environmental Management Plan	sum	1		-
		TIME-RELATED ITEMS				
	8,4	<u>Time Related Items</u>				
1.10	8.4.1	.1 Contractual Requirements (Time-related)	sum	1		-
		.2 Operation and maintenance of Contractors facilities on the Site for the duration of the contract				
	8.4.2	(a) Facilities for the Contractor				
1.11		.1 Storage sheds	sum	1		-
1.12		.2 Tools and Equipment	sum	1		-
1.13		.3 Construction Equipment	sum	1		-
	8.4.5	.3 Other Fixed-charge Obligations, Specify:				
1.14		.1	sum	1		-
1.15		.2	sum	1		-
Carried Forward to Next Page						-

Contractor

Witness 1

Witness 2

Employer

Witness 1

Witness 2

Item	Payment Reference	Description	Unit	Qty	Rate (R)	Amount (R)
Brought Forward from Previous Page						-
1.16	8.4.3	.4 Supervision for duration of the contract	sum	1		-
1.17	8.4.4	.5 Company and Head Office Overheads	sum	1		-
		.6 Occupational Health and Safety				
1.18	8.4.6	(a) Compliance with Occupational Health and Safety Act (Act 85 of 1993) and its regulations and with the Employers Health and Safety Specification.	sum	1		-
		.7 Environmental Management				
1.19	8.4.7	(a) Compliance with Environmental Management Plan	sum	1		-
Total: Schedule No. 1 Preliminary and General						
Total Carried Forward to Summary of Schedules						-

Contractor

Witness 1

Witness 2

Employer

Witness 1

Witness 2



Item	Payment Reference	Description	Unit	Qty	Rate (R)	Amount (R)
2		Schedule No. 2 Provisional Sums				
	SANS 1200A 8,5	PROVISIONAL SUMS				
		<u>Provisional Sum Allowances</u>				
2.1		.1 General allowance as instructed by the Engineer	P.Sum	1	50 000,00	50 000,00
2.2		(a) Overheads, charges and profit on (.1) above	10%			5 000,00
Total: Schedule No. 2 Provisional Sums						
Total Carried Forward to Summary of Schedules						55 000,00

Contractor

Witness 1

Witness 2

Employer

Witness 1

Witness 2

Item	Payment Reference	Description	Unit	Qty	Rate (R)	Amount (R)
3		Schedule No. 3 Fencing				
	SANS 1200C	NEW FENCING MEASURED ALL INCLUSIVE				
		<u>Clear and Grub Site</u>				
	8.2.1	<u>Clear and grub strips for (where not cleared within other clear and grub sites):</u>				
		.1 <u>Fencing line</u>				
3.1		(a) 1m width	m	1035		-
		<u>Fencing</u>				
		<u>Fencing supplied and fixed complete, including all posts, stays, standards, droppers, excavation, backfilling, concrete bases, etc. as per DWG 3338.17.00.AAZ.10.U001.VER A, for:</u>				
		.1 <u>Diamond mesh fencing</u>				
3.2		(a) 1.8m high	m	1035		-
		<u>Gates</u>				
		<u>Gates supplied and fixed complete, including all posts, stays, hinges, locking devices, excavation, backfilling, concrete bases, etc. as per DWG 3338.22.00.GZA.17.D001.VER A, for:</u>				
		.1 <u>Double swing gates</u>				
3.3		(a) 1.8m high, total open width = 6m	no	1		-
	SANS 1200C	WORK TO EXISTING FENCING				
		<u>Dismantle existing fencing and gates to stockpile for re-use</u>				
		<u>Note:</u> All existing material removed and to be re-used for re-erection later, must be stockpiled neatly on a site designated by the Engineer and protected from damage or theft. All damaged elements and remaining rubble shall be spoiled off site by the contractor.				
	8.2.5	<u>Taking down existing fences and gates and neatly stacking on site designated by the Engineer, for:</u>				
		.1 <u>Steel mesh/wire fences and gates</u>				
3.4		(a) For all types and heights (<1.8m)	m	35		-
		<u>Dismantle existing fencing and gates to spoil material</u>				
	8.2.6	<u>Taking down existing fences and gates and spoiling material at designated spoil site identified by the Engineer, for:</u>				
Carried Forward to Next Page						-

Contractor

Witness 1

Witness 2

Employer

Witness 1

Witness 2

Item	Payment Reference	Description	Unit	Qty	Rate (R)	Amount (R)
Brought Forward from Previous Page						-
3.5		.1 <u>Steel mesh/wire fences and gates</u> (a) For all types and heights (<1.8m) <u>Reinstatement of fences and gates from stockpile</u> <u>Take from stockpile on site, existing fences and gates and reinstate in similar position including replacing missing or damaged elements, etc.</u>	m	R/O		Rate Only
3.6		.1 <u>Steel mesh/wire fences and gates</u> (a) For all types and heights (<1.8m)	m	35		-
		Total: Schedule No. 3 Fencing				
Total Carried Forward to Summary of Schedules						-

Contractor

Witness 1

Witness 2

Employer

Witness 1

Witness 2



SANDBAGS FOR PIPE STORAGE YARD
Summary of Schedules

Schedule No.	Description	Amount (R)
1	PRELIMINARY AND GENERAL	
2	PROVISIONAL SUMS	
3	SANDBAGS	
Total Construction Cost		
Value Added Tax at 15%		
Total Amount of Tender Carried Forward to Form of Bid		

Contractor Details :

Contractor's Name: _____
 Company Registration Number: _____
 Adres: _____

Contact Person:

Cell Number: _____
 Email: _____

Signature :

By Tenderer : _____
 Company Name : _____
 Date : _____

Item	Payment Reference	Description	Unit	Qty	Rate (R)	Amount (R)
1		Schedule No. 1 Preliminary and General				
	SANS 1200A	FIXED-CHARGE ITEMS				
	8,3	<u>Fixed-charge Items</u>				
1.1	8.3.1	.1 Contractual Requirements (Fixed)	sum	1		-
		.2 Establishment of Facilities on Site				
	8.3.2	(a) Facilities for the Contractor				
1.2		.1 Storage sheds	sum	1		-
	8.3.3	.3 Other Fixed-charge Obligations, Specify:				
1.3		.1	sum	1		-
1.4		.2	sum	1		-
1.5	8.3.4	.4 Removal of Contractors Facilities on Completion	sum	1		-
		.5 Occupational Health and Safety				
1.6	8.3.5	(a) Compliance with Occupational Health and Safety Act (Act 85 of 1993) and its regulations and with the Employers Health and Safety Specification.	sum	1		-
		.6 Environmental Management				
1.7	8.3.6	(a) Compliance with Environmental Management Plan	sum	1		-
		TIME-RELATED ITEMS				
	8,4	<u>Time Related Items</u>				
1.8	8.4.1	.1 Contractual Requirements (Time-related)	sum	1		-
		.2 Operation and maintenance of Contractors facilities on the Site for the duration of the contract				
	8.4.2	(a) Facilities for the Contractor				
1.9		.1 Storage sheds	sum	1		-
	8.4.5	.3 Other Fixed-charge Obligations, Specify:				
1.10		.1	sum	1		-
1.11		.2	sum	1		-
Carried Forward to Next Page						-

Contractor

Witness 1

Witness 2

Employer

Witness 1

Witness 2



Item	Payment Reference	Description	Unit	Qty	Rate (R)	Amount (R)
Brought Forward from Previous Page						-
1.12	8.4.3	.4 Supervision for duration of the contract	sum	1		-
1.13	8.4.4	.5 Company and Head Office Overheads	sum	1		-
		.6 Occupational Health and Safety				
1.14	8.4.6	(a) Compliance with Occupational Health and Safety Act (Act 85 of 1993) and its regulations and with the Employers Health and Safety Specification.	sum	1		-
		.7 Environmental Management				
1.15	8.4.7	(a) Compliance with Environmental Management Plan	sum	1		-
Total: Schedule No. 1 Preliminary and General						
Total Carried Forward to Summary of Schedules						-

Contractor

Witness 1

Witness 2

Employer

Witness 1

Witness 2

Item	Payment Reference	Description	Unit	Qty	Rate (R)	Amount (R)
2		Schedule No. 2 Provisional Sums				
	SANS 1200A 8,5	PROVISIONAL SUMS				
		<u>Provisional Sum Allowances</u>				
2.1		.1 General allowance as instructed by the Engineer	P.Sum	1	50 000,00	50 000,00
2.2		(a) Overheads, charges and profit on (.1) above	10%			5 000,00
Total: Schedule No. 2 Provisional Sums						
Total Carried Forward to Summary of Schedules						55 000,00

Contractor

Witness 1

Witness 2

Employer

Witness 1

Witness 2

3	Payment Reference	Description	Unit	Qty	Rate (R)	Amount (R)
3		Schedule No. 3 Sandbags				
	SANS 1200A	SANDBAGS FOR PIPE SUPPORT				
	8,5	<u>Supply Material from Commercial Sources</u>				
		.1 <u>Supply of Sandbags</u>				
3.1		(a) Bag size of 885mm x 630mm	no	3040		-
		.2 <u>Fine sand</u>				
3.2		(a) Free of any particiles such as rocks and/or stones	m³	47		-
		<u>Install of Material on Site</u>				
		.1 <u>Install of Filled Sandbags</u>				
3.3		(a) Sandbags (4 bags per pipe and 6m apart)	no	3040		-
		Total: Schedule No. 3 Sandbags				
Total Carried Forward to Summary of Schedules						-

Contractor

Witness 1

Witness 2

Employer

Witness 1

Witness 2



SECURITY FOR PIPE STORAGE YARD
Summary of Schedules

Schedule No.	Description	Amount (R)
1	PRELIMINARY AND GENERAL	
2	PROVISIONAL SUMS	
3	SECURITY	
Total Construction Cost		
Value Added Tax at 15%		
Total Amount of Tender Carried Forward to Form of Bid		

Contractor Details :

Contractor's Name: _____
 Company Registration Number: _____
 Adres: _____

Contact Person:

Cell Number: _____
 Email: _____

Signature :

By Tenderer : _____
 Company Name : _____
 Date : _____

Item	Payment Reference	Description	Unit	Qty	Rate (R)	Amount (R)
1		Schedule No. 1 Preliminary and General				
	SANS 1200A	FIXED-CHARGE ITEMS				
	8,3	<u>Fixed-charge Items</u>				
1.1	8.3.1	.1 Contractual Requirements (Fixed)	sum	1		-
		.2 Establishment of Facilities on Site				
	8.3.2	(a) Facilities for the Contractor				
1.2		.1 Guard house and Ablutions	sum	1		-
	8.3.3	.3 Other Fixed-charge Obligations, Specify:				
1.3		.1	sum	1		-
1.4		.2	sum	1		-
1.5	8.3.4	.4 Removal of Contractors Facilities on Completion	sum	1		-
		.5 Occupational Health and Safety				
1.6	8.3.5	(a) Compliance with Occupational Health and Safety Act (Act 85 of 1993) and its regulations and with the Employers Health and Safety Specification.	sum	1		-
		.6 Environmental Management				
1.7	8.3.6	(a) Compliance with Environmental Management Plan	sum	1		-
		TIME-RELATED ITEMS				
	8,4	<u>Time Related Items</u>				
1.8	8.4.1	.1 Contractual Requirements (Time-related)	sum	1		-
		.2 Operation and maintenance of Contractors facilities on the Site for the duration of the contract				
	8.4.2	(a) Facilities for the Contractor				
1.9		.1 Guard house and Ablutions	sum	1		-
	8.4.5	.3 Other Fixed-charge Obligations, Specify:				
1.10		.1	sum	1		-
1.11		.2	sum	1		-
Carried Forward to Next Page						-

Contractor

Witness 1

Witness 2

Employer

Witness 1

Witness 2



Item	Payment Reference	Description	Unit	Qty	Rate (R)	Amount (R)
Brought Forward from Previous Page						-
1.12	8.4.3	.4 Supervision for duration of the contract	sum	1		-
1.13	8.4.4	.5 Company and Head Office Overheads	sum	1		-
		.6 Occupational Health and Safety				
1.14	8.4.6	(a) Compliance with Occupational Health and Safety Act (Act 85 of 1993) and its regulations and with the Employers Health and Safety Specification.	sum	1		-
		.7 Environmental Management				
1.15	8.4.7	(a) Compliance with Environmental Management Plan	sum	1		-
Total: Schedule No. 1 Preliminary and General						
Total Carried Forward to Summary of Schedules						-

Contractor

Witness 1

Witness 2

Employer

Witness 1

Witness 2

Item	Payment Reference	Description	Unit	Qty	Rate (R)	Amount (R)
2		Schedule No. 2 Provisional Sums				
	SANS 1200A 8,5	PROVISIONAL SUMS				
		<u>Provisional Sum Allowances</u>				
2.1		.1 General allowance as instructed by the Engineer	P.Sum	1	50 000,00	50 000,00
2.2		(a) Overheads, charges and profit on (.1) above	%			5 000,00
Total: Schedule No. 2 Provisional Sums						
Total Carried Forward to Summary of Schedules						55 000,00

Contractor

Witness 1

Witness 2

Employer

Witness 1

Witness 2

3	Payment Reference	Description	Unit	Qty	Rate (R)	Amount (R)
3		Schedule No. 3 Security				
	SANS 1200A 8,5	SECURITY				
		<u>Security for storage area</u>				
3.1		.1 Day Shift Security	Days	183		-
3.2		.2 Night Shift Security	Days	183		-
		Total: Schedule No. 3 Security				
Total Carried Forward to Summary of Schedules						-

Contractor

Witness 1

Witness 2

Employer

Witness 1

Witness 2