

the romantic belgravia walk

Savour Kimberley's magnificent and romantic past by spending a few hours on a historical walk in the most beautiful and historical suburb of Belgravia. This circular walk covers a distance of some two kilometres and leads the visitor to 33 of the City's most historical sites. During the walk, old Kimberley's opulent lifestyle and its characteristic architecture will be revealed and famous monuments will be visited.

The McGregor Museum in Atlas Street sells a Belgravia Historical Guide Book.

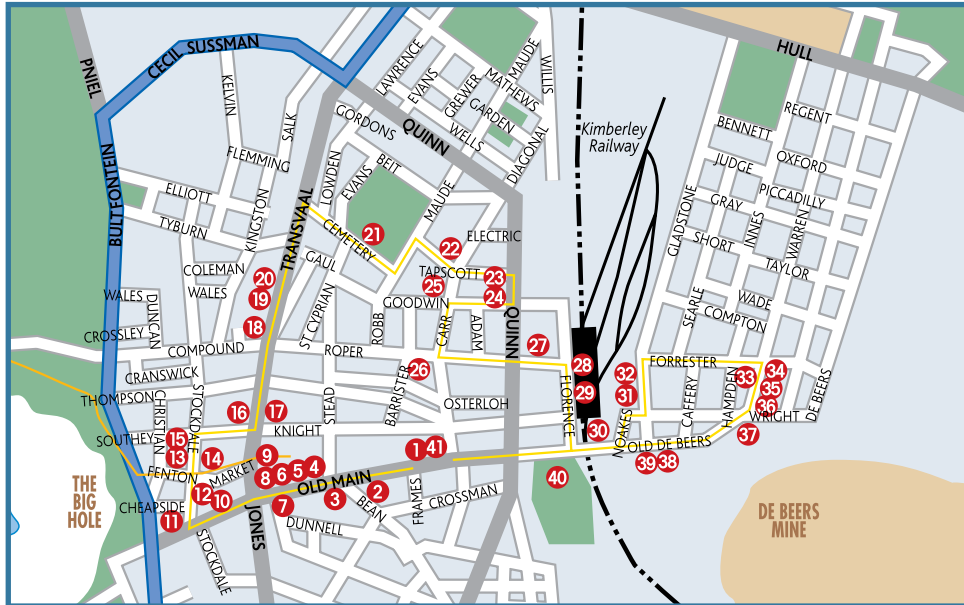


- 1 **McGregor Museum** - Starting point
- 2 No 3 Egerton Road - Former home of architect DW Greatbatch
- 3 **Halfway House** - Site of the world's first drive-in pub
- 4 No 9 Egerton Road - Designed by DW Greatbatch in 1897 for Arend Brink, diamond broker and valuator

- 5 No 22 Elsmere Road - For more than 50 years the home of HA Morris, an honoured citizen. His sister-in-law, the artist Olive McIntyre, lived here from 1917 to 1990
- 6 **Girls' High School** - Founded in 1887
- 7 No 18 Elsmere Road - Russell Elliot, an honoured citizen, lived here for many years
- 8 The houses of **Colonel Sir David Harris** - Built for the 'genteel poor'
- 9 **St Patrick's, a Christian Brothers' College** - Founded in 1897
- 10 **Nazareth House** - Established in 1888 for the care of the old as well as orphans irrespective of creed or country. Now part of St Patrick's.
- 11 **George and Dragon Pub Restaurant** - Site of William Gasson's pharmacy
- 12 **Sister Henrietta Nursing College**
- 13 **Battle of Square Hill Memorial** (Cape Corps)
- 13 The **memorial plaque** to Major General Sir Henry Timson Lukin, which was unveiled in 1936
- 13 **Cenotaph World War I & II** - Designed by William Timlin and erected in honour of the 400 men killed during the First World War
- 14 **Masonic Temple** - Erected in 1888/89 by the combined lodges which at present own and occupy it
- 15 **Statue of Sister Henrietta Stockdale**
- 16 The **Cathedral Church of St Cyprian the Martyr** was elevated to cathedral status on 30 June 1912 and Kimberley became a city
- 17 **Statue of Cecil John Rhodes** - Erected by public subscription in 1907
- 18 Bust of **Colonel Sir David Harris** - Honorary Colonel of the Kimberley Regiment, erected in 1930
- 19 **The Drill Hall**, Kimberley Regiment - Originally the art gallery of the South African and International Exhibition, 1892
- 20 **Violet Bank** - Originally erected at the turn of the 20th century. Rebuilt in the 1990s.
- 21 **Queen's Park** - Founded in 1874, the original Kimberley Public Gardens were renamed to mark the coronation of Elizabeth II
- 22 **Rudd House**, No 5-7 Loch Road - Home of HP Rudd, originally known as **The Bungalow**
- 23 **Cape Police Memorial** - At its base is the gun captured in 1900 from the Boers at Dronfield. Unveiled in 1904
- 24 Site of **Belgravia Mine**, c 1896
- 25 No 7 Lodge Road - Built in 1906/07 for Ernest Oppenheimer
- 26 No 11 Lodge Road - The house Wilfred Soloman Harris built for his English bride
- 27 No 10 Lodge Road, **Dunluce** - Erected in 1897 for Gustave Bonas and sold to John Orr in 1902
- 28 No 13 Lodge Road, **The Grange** - Built in 1898 and the home of F Hirschhorn from 1905 to 1930
- 29 **Duggan-Cronin Gallery** - The Lodge was erected in 1888 for JB Currey, manager of the London and South African Exploration Company
- 30 **Alex Hall Memorial Gardens**

the great kimberley north walk

Another great historical walk covering the city centre and the area to the north of the city centre. More than forty enchanting and notable historic sites and streets, including the Executioner's Yard and Stockdale Street, are encountered on the route. The walk starts and ends at one of Kimberley's oldest hotels, the Savoy, and covers a distance of just under four kilometres. *The McGregor Museum sells a Great Kimberley North Walk Guide Book.*



- 1 **Savoy Hotel** - Starting point. Opened on 1 September 1892
- 2 **Siege Buildings** - Built by George Church
- 3 **Traffic Lights** - First traffic lights in Kimberley. Erected in October 1947
- 4 **Market Square** - Trading centre of the Kimberley diamond diggings from 1871
- 5 **The Market Shelter** (aka The Market House) - Legend has it that the structure was delivered to the wrong Kimberley
- 6 **The Kimberley City Hall** - Opened on 20 September 1899. *See page 21*
- 7 **Electric Street Lights** - First in the southern hemisphere, 1882
- 8 **1890 Pioneer Memorial** - Constructed of Matopo rocks with the pattern resembling the burial place of Cecil Rhodes, commemorating the departure of the Rhodesian pioneers
- 9 **The Kimberley Tram** - *See page 10*
- 10 **Standard Bank** (No 10 Old Main Road) - Built in 1922
- 11 **Consolidated Buildings 1926** - Diamonds were sorted here until 1974

- 12 **Diamond Fields Advertiser** - The second home for Kimberley's premier daily newspaper. Until 1998 it was used by the **Red Cross Society**
- 13 **De Beers Benefit Society Building** - Designed by DW Greatbatch
- 14 **De Beers Head Office** - Originally the Head Office of Barney Barnato's Kimberley Central Diamond Mining Company
- 15 **The Stables** - Converted into garages for De Beers' fleet of cars
- 16 Site of **The Grand Hotel**
- 17 **Griqualand West Supreme Court** - Built of blue dolerite by convicts
- 18 **Executioner's Yard** - Murderers were executed here in the 1870s and 1880s
- 19 **The Transvaal Road Police Station** - The 6th Floor was most notorious during the apartheid years, where Phakamile Mabija died in 1977
- 20 **Police Memorial** (Outside police station) - Tribute to 75 years 'of excellent service' (1913-1988)
- 21 **Pioneer Cemetery** - Gate donated in memory of Sir Joseph B Robinson's daughter buried within
- 22 No 9 Tapscott Street - Built by George Church as a wedding gift to his son
- 23 No 22 Tapscott Street - Murderess Daisy De Melker lived here when visiting her sister
- 24 No 25 Goodwin Street - Built in 1900 for the chemist WH Helmore
- 25 No 19 Carr Street - Built in 1897 and is a conservation worthy site
- 26 **Rugby House** (No 28 Roper Street) - Built by the famous rugby player Frederick James 'Uncle' Dobbin for his son in 1928
- 27 **Don McHardy Memorial Fountain** - Built in memory of the former General Manager and Director of De Beers
- 28 **Victorian Railway Station** - Built in 1886
- 29 **Transport Museum and World War I & II Memorials** - *See page 26*
- 30 **De Beers Bridge** - Erected in 1891 to solve the traffic problem at the railway crossing
- 31 **St Albans Church** - Contains some historical artefacts
- 32 No 2 Takoon Square - **The Vicarage** (house) of the Rector of St Albans
- 33 **Gladstone School** - Kimberley's first double storey school building
- 34 **De Beers' Swimming Pool** - Opened to the public on 23 October 1907
- 35 **Cecil Rhodes' De Beers Mining Company Boardroom** - Possibly the most historical address in Kimberley. *See page 25*
- 36 **Thusong Children's Home** - Place of safety and shelter for street children
- 37 **The De Beers Mine** - The De Beers Mining Company was formed on 28 April 1880
- 38 **The Constance Hall** - Now known as the 'Danskraal' (an area in which to dance), it was utilised as a social hall
- 39 **Cold Storage Building** - The plant could make 5 tonnes of ice daily and could hold 6 000 carcasses of sheep
- 40 **KAC Grounds** - Kimberley Athletic Club, a famous sports ground
- 41 **Oriental Building** (No 27 Old De Beers Road) - Built in 1905 and notable for the two reclining female figures on the parapet

the historic city

Steeped in exciting history, Kimberley boasts many traces of the past in its architectural heritage, historic sites, museums, heritage sites, and an incredible number of monuments. The following is an alphabetical listing of the most important and imposing of these historic attractions.



The Magersfontein Burgher Memorial

Alexander McGregor Memorial Museum

Map reference: 9

This elegant building in Chapel Street was a gift to the citizens of Kimberley from Margaret McGregor in memory of her late husband, Alexander, an early Mayor of Kimberley. The museum opened in 1907. Restored for its centenary in 2007.

Alexandersfontein

In its heyday, this imposing building was regarded as one of South Africa's top three hotels. It began, however, as a modest hotel situated on the old Cape Town road. It was occupied by Boer forces during the Siege of Kimberley. A new luxury hotel was built on the site and opened on 1 January 1903. The new hotel became renowned as a venue for fabulous weekend picnics and dances for well-to-do Kimberley residents, travelling there by electric tramcar. Today the building serves as the Jack Hindon Officers' Mess for the South African Army.

Anglo-Boer War Memorials

These are spread out over local battlefields. One of the most impressive is the Celtic cross in memory of the Highland Brigade losses at Magersfontein. Also at Magersfontein are the Scandinavian memorials, a monument to the Black Watch Regiment and stones commemorating both Boer and British losses. Close to the Magersfontein battlefield is the hugely impressive Burgher Monument. Further afield are poignant memorials to men who died in action or of disease, at Modder River, Graspan and Belmont. See feature on page 44

Barkly West Museum

Situated 35 kilometres from Kimberley

Displays in this quaint museum feature archaeological and geological specimens of Canteen Kopje, an early river diamond digging, Klipdrift Diggers' Republic, and many richly illustrated aspects of life on the early Diamond Fields. Much of the collection was assembled by Mining Commissioner, Gideon Retief, in the 1940s.

Big Hole (The)

Map reference: 1

Kimberley's most famous landmark and 'must see tourist attraction' has a new exhibition centre, viewing platform and revamped Old Town. See the feature on page 6

Canteen Kopje

At Barkly West

An Earlier Stone Age archaeological site with open air displays and an historical walk on the geology, archaeology and diamond diggings of the area. Two of the world's largest hand-axes were found here.

Cape Corps Memorial

Map reference: 17

At the time of the Great War, 1914-1918, the headquarters of this famous military unit was in Kimberley. Brilliant success at the Battle of Square Hill, Palestine, 18-19 September 1918 - where the German field gun, now the centrepiece of this memorial, was captured from the Turks - was clouded on 20 September at the Battle of Kh Jibeit where 51 men made the supreme sacrifice, and a hundred were wounded. The memorial was unveiled by General Smuts in 1934 and has recently been relocated to a position next to the Cenotaph.

Cape Police Memorial

A statue of a uniformed trooper of the Cape Police commemorates their losses during the Anglo-Boer War of 1899-1902. Kimberley was the headquarters of the Griqualand West Division of the Cape Police, also called 'CPII'. One section of the 'CPII' even had a field artillery. The Cape Police served in the defence of Kimberley during the Siege. The Boer gun forming part of the memorial was captured during a skirmish at Dronfield, north of Kimberley.

Cenotaph

Map reference: 17

Designed by the famous local architect and painter, William Timlin, it was erected to commemorate 400 Kimberley men who fell in World War I. It is unusual in that it gives the dates 1914-1919 (hostilities ceased 1918; Peace Treaty in 1919). Plaques bearing the names of Kimberley men who died during World War II (1939-1945) were added later.



The Big Hole

© Steve Newbould



Cape Corps Memorial

© Steve Newbould



World War II Cenotaph

© Steve Newbould



© Steve Newbould

Kimberley's elegant City Hall, built in 1899



© Johann van Schalkwyk

Diamond Trading Centre

City Hall

Map reference: 8

A City centre landmark! This imposing building was designed by Fergus Carstairs Rogers in Roman Corinthian style. It was built in 1899 just before the outbreak of the Anglo-Boer War and served as a distribution point for rations during the Siege of Kimberley.

Clyde N Terry Hall of Militaria

Situated at the Kimberley MOTH centre

World War II veteran, Clyde Terry, built up his amazing collection over a time span of more than a decade. It comprises, as son Clyde Junior's puts it, 'anything military'. Displays include international military badges, uniforms, medals and other relics. The collection is housed in a building constructed by Clyde Junior and a team of helpers.

De Beers Head Office

Map reference: 4

This building was the original headquarters of Barney Barnato's Kimberley Central Diamond Mining Company. Today it is the seat of the internationally renowned and influential diamond mining company, De Beers Consolidated Mines Ltd.

take a trip on an old tramway

Map reference: 1

Although the Kimberley Tramways Company was formed in 1880, it took until 1886 for the Gibson Brothers to set up the Victoria Tramways Company and construction on the first tramways started in 1887. It was a 3'6" gauge tramway linking Kimberley and the then separate Borough of Beaconsfield. These first tram cars were pulled by mules.

In 1905 an electrified tramway was opened by De Beers Consolidated Mines Ltd linking Kimberley with the posh Alexandersfontein Hotel, while the Beaconsfield route was electrified in 1906.

Buses began to replace trams in Kimberley in 1939 but the Kenilworth trams ran until 1947 while the last trams were used in the mining area until as recently as 1964, after which virtually all tramway infrastructure was demolished.

It was decided to reintroduce a tramway between the historic City Hall and the Big Hole as a tourist attraction and the first rails were laid in June 1885. However, the restoration of the present tram, which was donated by De Beers Consolidated Mines Ltd, had already commenced in 1983. This tram, identified as Car Number 3, was first used by De Beers Consolidated Mines Ltd. It was also known as the 'tower car', a name derived from the adjustable platform which had been fitted in order to carry out overhead maintenance to the tram poles and wires. It is believed that the tramcar was built by John Stephenson Company and the JG Brill Company of Philadelphia and originally ran between 1906 and 1914.

The livery of the tram follows closely the yellow and black livery of the original Kimberley & Alexandersfontein Electric Railway. The wording added on the frames is 'Kimberley Tramways', and so Car Number 3 was restored to its former operational condition and proudly reintroduced on 12 October 1985.

Today tens of thousands of tourists annually take a trip down memory lane on Car Number 3. They literally get carried away by the travelling tram's screeching sounds, its gentle swaying and the sound of a foot operated warning bell as they pass some of Kimberley's most historic sites such as the Head Office of the De Beers Consolidated Mines Ltd and the original Big Hole mine dumps.



© Steve Newbould





Diggers' Fountain

Map reference: 13

Sculpted by Herman Wald, this magnificent larger-than-life-size bronze monument situated in the Ernest Oppenheimer Memorial Gardens, honours and recognises the role and effort of the diamond diggers who brought Kimberley into existence. It portrays five diggers holding a diamond sieve on high, each digger representing one of the five major Kimberley mines.

Driekopseiland Rock Engravings

About 70km from Kimberley, near Plooyburg

Only by appointment through the museum. Driekopseiland (Three head island) is a site of more than 3 000 Khoesan rock engravings made on glacial pavements in the bed of the Riet River. Believed to be between 800 and 2 500 years old, these engravings are submerged when the river rises.

Dunluce

Map reference: 19

A reflection of late Victorian elegance and a fine example of the unique Kimberley architecture, this distinguished home was built in 1897 for Gustav Bonas. John Orr, a famous retailer in South Africa,

© Steve Newbould

Digger's Fountain



© Johann van Schalkwyk

The elegant Dunluce

It is said that during the peak of the diamond rush Kimberley had more pubs than pharmacies and churches. This was partly due to a shortage of natural surface water, but mostly, one would suspect, to a diggers taste for beer or something stronger! Social life in Kimberley was as hectic as the frantic search for diamonds and many a digger celebrated a large find or drowned his diamond digging sorrows in these pubs.

One such pub, regarded as the oldest operating bar in Kimberley and dating from the 1870s, is the **Star of the West** in North Circular Road. Built on 5.4 metres of solid rock foundation, it started off as a hotel and after receiving its victualler's licence in 1877, it catered for the workers on the Kimberley Mine. The original bar counter and shelving behind the bar is still in use today while rumour has it that Rhodes and Barnato also enjoyed a few drinks in the 'Star'. It is a Provincial Heritage Site, declared in 1990. On request, the Kimberley Tram will stop at the 'Star'. Another unique and historic pub is the **Halfway House** in Dutoitspan Road. It also started off as a hotel and derived its name from being on the main thoroughfare between the then separate boroughs of Kimberley and Beaconsfield. In 1897 the 'Half', as it was referred to, was moved to its present site because Rhodes wanted to build a sanatorium on the original site. The 'Half' is steeped in tradition and is world-famous for being the original 'park and drink' bar. Legend at the 'Half' has it that the custom was started by Rhodes. It is said that rather than getting down from his horse, he was accustomed to taking his drink astride his mount. In 1880, the 'Half' was officially licenced to serve the passing trade in and on their vehicles. All you have to do today to be served a drink in your car is to hoot your horn for a friendly toot.

So don't forget tradition - have your first beer in Kimberley served in the comfort of your own car! You can also try out the bar at the **Phoenix Hotel**, situated in

Beaconsfield, which is virtually unchanged since 1885.

All the bars serve good honest pub grub at reasonable prices and the locals are always game for a good chat and shared gossip.

pubs of a bygone era



Star of the West - Map reference: 2

Halfway House - Map reference: 20

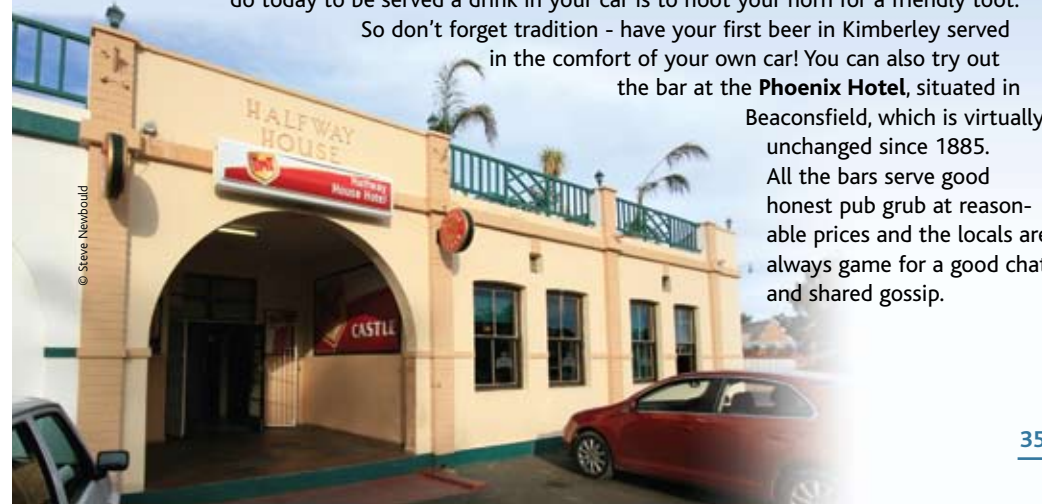


© Johann van Schalkwyk

TOP: Barney Barnato in a familiar pose

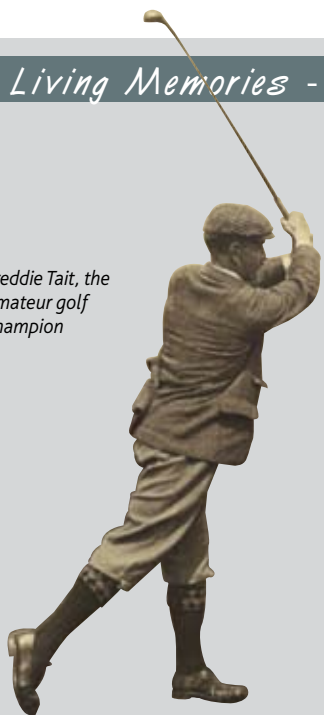
ABOVE: Kimberley's oldest operating watering hole - The Star of the West

BELOW: Park and drink at the Halfway House



© Steve Newbould

Freddie Tait, the amateur golf champion



bought the house in 1902. The house, which retains much of the original furnishings, has much decorative woodwork on its facade.

Firsts in History

Unknown to many people Kimberley lays claim to numerous historic firsts. See feature on the outside back cover.

Freddie Tait Golf Museum

Situated at the Kimberley Golf Club, it is the first golfing museum in Africa. On display are trophies and golf artefacts from a century of golf in Kimberley including the famous putter of Freddie Tait. Tait was British amateur golf champion in 1896 and 1898. He was killed at Koodoosberg, near Kimberley in 1900 during an Anglo-Boer War skirmish.

Halfway House

Map reference: 20

An old pub steeped in tradition. See feature on page 35.

Honoured Dead Memorial

Map reference: 23

This memorial was designed at the insistence of Rhodes by the famous architect, Sir Herbert Baker, who later designed the Union Buildings in Pretoria. The memorial commemorates those who died while defending Kimberley during its Siege in the Anglo-Boer War campaign. Bearing an inscription by Rudyard Kipling, who sometimes resided on Rhodes' estate in Cape Town, the memorial is the tomb of 27 soldiers. At the base of the monument is the famous 'Long Cecil' gun which was manufactured during the siege at the De Beers Workshops, to counter the artillery fire of the Boers. The monument, built of sandstone quarried in the Matopo Hills in Zimbabwe, is situated at the highest point in Kimberley where five roads meet. It is regarded as one of the finest memorials in South Africa.

Kimberley Africana Library

Map reference: 10

One of the best research libraries in South Africa. It contains a wealth of material on Africa, the



© Steve Newbould

Kimberley Club

Northern Cape and Kimberley in particular. There are also special collections of old and rare books, such as Dr Robert Moffat's own copy of his translation of the Old Testament into Setswana, a local indigenous language. The library opened in 1887 as a public library and the building retains many of its original features like a wrought-iron gallery, spiral staircase and antique furniture.

Kimberley Club

Map reference: 11

Here, it is said, were once 'more millionaires to the square foot' than at any other place on earth. Established in 1881, its most famous members included Cecil John Rhodes, Dr Leander Starr Jameson, Charles Dunell Rudd, Barney Barnato, Sir Ernest Oppenheimer and his son Harry.

Kimberley Regiment Drill Hall

Originally built as the Arts Hall for the South African and International Exhibition in 1892, it was afterwards used by the Kimberley Rifles for drilling recruits. It serves today as the headquarters of the famous Kimberley Regiment which was established in 1899.

Kimberley Tramways Company

Map reference: 7

Take a trip on the old car number 3. See feature on page 33.

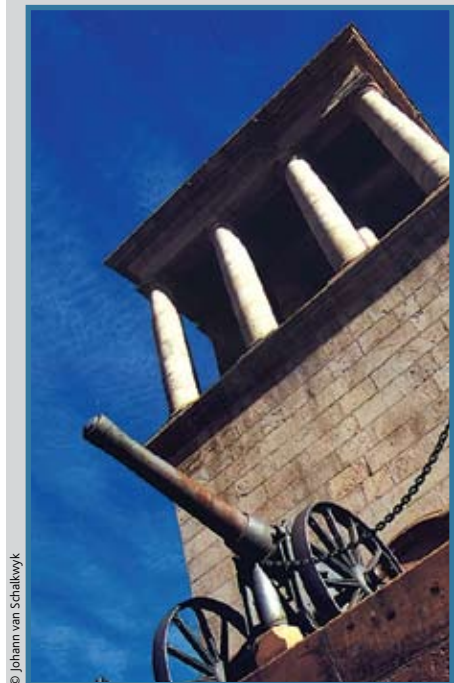
Magersfontein Battlefield Museum

An absolute must for the military history buff. This museum depicts the full drama of the Magersfontein battle. Uniforms and many weapons as used during the battle are on display, as well as biographic sketches of a number of combatants. A short but spectacular video-based sound and light show offers visitors an almost real-life feeling of the battle. Sections of the famous Boer trenches can still be seen from the hilltop observation post where there is also a model of the battlefield. There are numerous monuments and information panels on the battlefield and visitors are welcome to take a walk or drive around.



© Steve Newbould

Highland Brigade Memorial, above the museum



© Johann van Schalkwyk

Honoured Dead Memorial

the mcgregor museum

Map reference: 22. Atlas Street



Instigated by Cecil John Rhodes as the Kimberley Sanatorium in 1897, this magnificent building has seen many uses. Renamed the Hotel Belgrave in 1908, it later served as a convent school. The McGregor Museum, outgrowing its original building in town, moved its headquarters here in the 1970s, and is today the principal research institution in the Northern Cape Province. Dazzling displays can be viewed on natural history and the environment, the origins of humankind and the history of the region, the Siege of Kimberley, Kimberley Regiment, religions of the world and the histories of churches on the Diamond Fields. Rhodes occupied two modest rooms here during the Kimberley Siege, which have been restored as part of the Siege Gallery.

Contact us:

Telephone: 053 839 2700 / Fax: 053 842 1433
Monday to Saturday: 09:00 - 17:00
Sunday: 14:00 - 17:00

ABOVE: Reconstruction of *Australopithecus africanus*, an early hominin of about three and a half million years ago

ABOVE RIGHT: The Anglo-Boer War is well documented at the museum
LEFT: Display at the McGregor Museum



© Dries Mostert



© Johann van Schalkwyk

© Johann van Schalkwyk



© Dries Mostert

© Steve Newbould



Living Memories - the historic city continued

Malay Camp Memorial

Map reference: 13

In 2006 an obelisk was erected in the Oppenheimer Gardens in the centre of the old Malay Camp. The memorial is dedicated to the people who were forcibly removed from this site between 1939 and 1959. The full story is told at the Alexander McGregor Memorial Museum in Chapel Street.



Malay Camp Memorial

© Steve Newbould

McGregor Museum

Map reference: 22 Atlas Street

A shortened version of 'Alexander McGregor Memorial Museum' was officially adopted for an institution which has long-since outgrown its original building in town. The museum presently has nine satellites including the Duggan-Cronin Gallery, Dunluce, Magersfontein Battlefield Museum, Pioneers of Aviation Museum, Wildebeest Kuil and the Wonderwerk Cave near Kuruman. See feature on page 38.

Nooitgedacht Glacial Pavements

Turn off after 24 kms from Kimberley on the Barkly West road, a further 8km along a gravel road.

The formation of this geographic and archaeological feature started some 250 million years ago during an Ice Age when enormous glaciers slowly ground over the 2 500 million year old Ventersdorp lava. As they moved, gravel and rocks in the glacier damaged the surface, forming an uneven backdrop which the San later used as canvas for their rock engravings.



Nooitgedacht Glacial Pavements with engravings

© Johann van Schalkwyk

Old De Beers Board Room

A humble building which served as the original headquarters for Rhodes' De Beers Diamond Mining Company. It consists of an entrance hall/waiting room, the board room dominated by the original table measuring four and a quarter metres long by one metre wide, an office, a study and a bedroom. Original furnishings and equipment are on display. The De Beers Mine Viewing Platform from where visitors can view another of Kimberley's big holes, is situated next to the Board Room.

Pioneers of Aviation Museum

General van der Spuy Drive, near the Kimberley Airport

Kimberley is regarded as the cradle of aviation in South Africa. This museum is located on the site of the first flying school, established in 1912. It houses a life-size replica of the Compton-Paterson bi-plane as used for the training of



© Steve Newbould

Rhodes Statue

pilots who included the nucleus of the future South African Air Force.

Rhodes Statue

Map reference: 17 on the Belgravia Historical Walk map

Reputed to be one of the finest equestrian statues in the world, this bronze work by Hamo Thornycroft depicts Cecil Rhodes mounted on his horse, with a map of Africa in his hands. Facing to the north, it is symbolic of Rhodes's vision of extending the British Empire deep into the African hinterland. Rhodes is depicted in the clothes he wore at the memorable indaba with the Matabele indunas (leaders) in the Matopos.

Robert Sobukwe House and Law Office

Robert Mangaliso Sobukwe, also known as 'Prof', was the founding President of the Pan Africanist Congress (PAC). As a leader of the pass law demonstration that ended in the tragedy at Sharpeville in 1960, Sobukwe was arrested for 'incitement' and given a three year prison sentence. This was extended by another six years of solitary confinement on Robben Island after the passing of the so-called 'Sobukwe Clause'. On his release in 1969 Sobukwe was banished to Kimberley where his movements were restricted. He lived in the house at 6 Naledi Street, Galeshewe, and having served his articles (his qualifications included three degrees) he practised from a law office (recently restored) in Royal Street, nearby. Sobukwe died in Kimberley in 1978.

Rudd House

Map reference: 18

The core of this grand home was built in 1888 and became the residence of the son of Charles Dunell Rudd, an original partner of Cecil Rhodes. HP Rudd became a Director of the De Beers Consolidated Mines Ltd. The Rudd family extended the house down the years so that Rudd House, originally known as The Bungalow, is today a magnificent rambling testimony to the life and quirks of an early diamond magnate.

Sol Plaatje House

Map reference: 32 Angel Street

Together with a library for African literature, there are displays on Plaatje's life and on the role of African involvement in the Anglo-Boer War. The building was originally Isaiah Bud



© Johann van Schaikwyk

Rudd House

wildebeest kuil



ABOVE & BELOW: Examples of some of the rock art to be seen at Wildebeest Kuil Rock Art Centre

Wildebeest Kuil Rock Art Centre and N/aoh Djao Craft Shop, N12 Barkly West Road (16 km from the centre of Kimberley) Tel (enquiries) 053 833 7069 / Cell 082 222 4777 The site is open 09:00 to 16:00 Monday to Friday and 10:00 to 16:00 on Saturdays and Sundays.

A visit to Wildebeest Kuil can be a deeply moving and thought-provoking experience. This amazing site, surrounded by land owned by the !Xun and Khwe San people has more than 400 engravings spread over a small sacred hill. The Khoe-San people, researchers and other stakeholders have joined together to conserve these engravings at Wildebeest Kuil.

A rock art movie, displays, and a guided walk back through time across this ancient sacred site, make it one of South Africa's premier rock art attractions.

The N/aoh Djao Craft shop, at the entrance to Wildebeest Kuil, show-cases brilliant contemporary San paintings, prints and curio crafts.

Exploring new media in art and craftwork, and through other aspects of cultural life and language, the !Xun and Khwe show resilience and make a name for themselves. Artworks from here have been exhibited in major galleries nationally and overseas.





Sol Plaatje House

M'belle's house bought for Plaatje in 1929 by Kimberley residents. M'belle was Plaatje's brother-in-law.

Star of the West

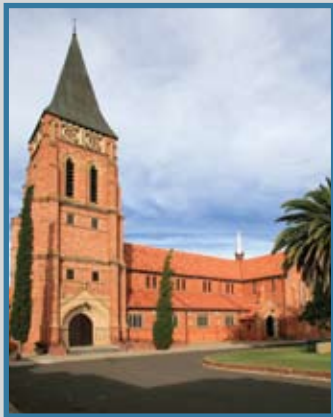
Map reference: 2

The oldest pub in Kimberley. See feature on page 35.

St Cyprian's Cathedral and Henrietta Stockdale Statue

Map reference: 15

Designed by Arthur Lindley of the firm DW Greatbatch, this neo-Gothic Cathedral was built in stages from 1907. The building and fine organ complement the rich musical and liturgical life of the Cathedral. Find out more about the Henrietta Stockdale Statue on page 21.



St Cyprian's Cathedral

Transport Museum

Map reference: 6. Situated on the Kimberley Station, Florence Road Kimberley's railway station retains much of its original fabric of stone and cast iron. The museum documents the development of the railways and transport systems of the region, and serves as a tribute to those responsible for these engineering feats, as well as the unsung heroes - Black workers who were not previously honoured for their labour on the railways. On display is a cabin of a real steam locomotive; the cycle used by the Southern Rhodesian Volunteers during the Anglo-Boer War; and model trains from the Baxter collection.

Wildebess Kuil Rock Art Centre

Take a walk back through time at one of South Africa's premier rock art sites See feature on page 41.

7 Lodge Road

Map reference: 25 on the Belgravia Historical Walk map

Harry Oppenheimer, a giant in the world diamond mining industry and late Chairperson of De Beers Consolidated Mines Ltd, was born in this house built for his father, Sir Ernest, in 1907. The Oppenheims lived there until 1915 after which they relocated to Johannesburg. Harry Oppenheimer died in August 2000. The building is today used as a private hotel.



The Transport museum

william humphreys art gallery



TOP: The new wing at the William Humphreys Art Gallery
ABOVE LEFT: Contemporary art on display
ABOVE RIGHT: 'Confused Rainbow Nation', a collagraph, by Dumisani Mbaso
© WHAG



Map reference: 14. Cullinan Road

Another fine Kimberley institution is the William Humphreys Art Gallery. This national museum specialises in South African art which includes a number of traditional African works. It is one of the few art galleries that displays San rock art as well as contemporary San art. The museum collection also contains works of sixteenth and seventeenth century Flemish and Dutch Old Masters, as well as English and French masters. For visitor enjoyment, the Gallery boasts a comfortable tea room and garden, which serves basic refreshments.

duggan-cronin gallery

Map reference: 21

This building is one of Kimberley's earliest surviving residences. It now houses a permanent collection of some 8 000 ethnographic photographs taken by Alfred Martin Duggan-Cronin, during expeditions into rural areas of Southern Africa, mainly between 1919 and 1939 - some of which are on display. Photographic exhibitions from other photographers are also exhibited on a temporary/revolving basis.



© Steve Newbould





sa boer vs the british empire

The Anglo-Boer War (1899-1902) had a profound effect on the course of history in South Africa. Both sides predicted a quick victory but found the reality of this war very different as the struggle engulfed the entire country. Not only were the Transvaal and Orange Free State Boer forces pitted against the might of professional and volunteer soldiers from the British Empire, but innocent bystanders, amongst them African, Coloured and Indian people of South Africa, were drawn into the war. Some 100 000 Black and Coloured people served with the British Army and at least 10 000 with the Boer forces - some of them as active and armed soldiers.

On 14 October 1899, Kimberley was surrounded by Boer forces. Four months of boredom, disease, death and general misery lay ahead. The Boer strategy was to shell Kimberley and at the same time to starve the garrison into surrender by sealing off all outside supplies. During the Siege of Kimberley, the military was under command of Lt Col Kekewich and he had to cope with Cecil Rhodes who sometimes had only harsh words for the Colonel's men. In fact, at one stage, Rhodes threatened to surrender Kimberley to the Boers in order to put a stop to Kimberley's misery. This threat of Rhodes was taken seriously and forced a change in the entire British strategy. Instead of advancing on Bloemfontein, the relief of Kimberley became the highest priority.

In their northward advance the British repeatedly came up against the Boers and many a battle was fought. On 23 November 1899, the British forces under command of Lord Methuen clashed with the Boers at Belmont. The Boers were



© McGregor Museum

ABOVE Anglo-Boer War Cartoon of Cecil John Rhodes
LEFT Boer burghers from the Orange Free State Commandos
RIGHT TOP a blockhouse at Modder River
RIGHT Scenes from the battlefields of 1899-1902



© McGregor Museum

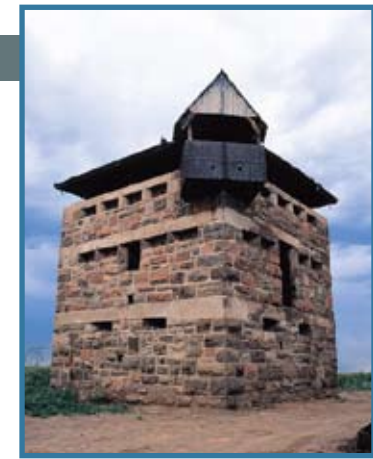
beaten off only to clash again with the British forces at Graspan on 25 November 1899. By now, Boer General Prinsloo's Free State commandos had been reinforced by the Transvaal commandos of General de la Rey. However, the Boers again fell back to the banks of the Riet River where they fought the Battle of Modder River on 28 November 1899. Again the Boers had to abandon their positions. They withdrew but then dug in at the foot of the Magersfontein hills which became the scene of one of the most epic Boer victories of the entire war.

British artillery opened fire on the Magersfontein hills on the afternoon of 10 December 1899. This signalled to the Boer forces that an all-out attack was imminent. However, as at Modder River, the Boers had made use of trenches which, as the British advanced, took them by surprise. It laid the foundation for an emphatic victory for the Boers. The British forces suffered about 976 casualties of whom 244 died. The Boers had some 250 casualties of whom 105 died.

It was not before 15 February 1900 that Kimberley was relieved by the British cavalry under General French. One last major battle had still to be fought in the Western campaign of the War namely the Battle of Paardeberg, which began on 17 February 1900.

On 18 February 1900, the British forces under command of Lord Kitchener surrounded the Boers at Paardeberg. The next morning, Lord Roberts took charge of the British forces to continue with the battle. It was to become the longest and biggest battle of the entire War, ending with the Boers surrendering on 27 February 1900. The Boer forces lost 100 men killed, 250 wounded and 4 096 men captured. British losses were 258 killed, 1 211 wounded and 86 taken prisoner.

These historic and largely untouched battlefields can all be explored by way of the Diamond Fields N12 Battlefields Route which starts in Hopetown some 120km south of Kimberley. Just follow the signs!



© Steve Newbould

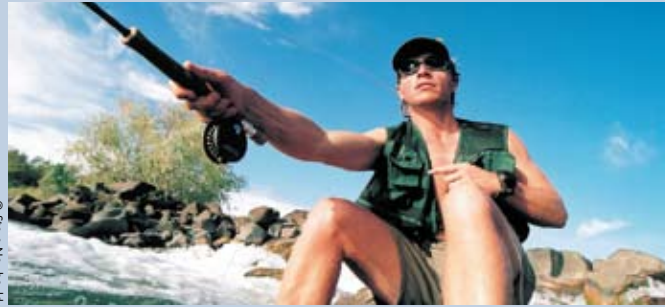


© McGregor Museum





A Canon on the Cenotaph Memorial



Fly-fishing on the Vaal River



General Ken van der Spuy Memeorial

making contact

International dialling: +27 53 followed by the number

For tourist information contact:

Kimberley Visitor Centre

121 Bultfontein Rd
PO Box 1976, Kimberley 8300
Tel 053 832 7298 Fax 053 832 7211
Email: tourism@kbymun.org.za
Web: www.northerncape.org.za/kimberley

Diamond Fields Tourism

Frances Baard District Municipality
Private Bag X6088, Kimberley 8300
Tel 053 838 0911 Fax 053 832 7639
Email: tourism@fdbm.co.za
Web: www.francesbaard.gov.za/tourism/index.php

Alexander McGregor Memorial Museum

Chapel Street
Tel 053 842 0099
Web: www.museumsonc.co.za

Alexandersfontein

Army Officer's Mess, Airport Road
Tel 053 830 3002

Alex Hall Memorial Garden

Egerton Road

Alluvial Diamond Diggings Tours

(By appointment only)
Tel 053 832 7298

Anglo-Boer War - Burgher Monument

Magersfontein Tel 053 833 7115
Web: www.museumsonc.co.za

Anglo-Boer War - Modder River Battlefield

N12 between Kimberley and Hopetown
Tel 053 833 7115
Web: www.museumsonc.co.za

Anglo-Boer War - Old Blockhouse

N12 between Kimberley and Hopetown
Tel 053 839 2735
Web: www.museumsonc.co.za

Anglo-Boer War - Koodoosberg Battlefield

Tel 053 833 7115 or 053 839 2735
Email: sunet@museumsonc.co.za
Web: www.museumsonc.co.za

Archaeology Route

Tel 053 839 2732 / 082 222 4777
Email: dmorris@museumsonc.co.za
Web: www.museumsonc.co.za

Architecture

Tel 053 839 2712
Email: vida@museumsonc.co.za
Web: www.museumsonc.co.za

Barkly West Museum (Old Toll House)

R31 between Kimberley and Barkly West
Tel 053 842 0099
Web: www.museumsonc.co.za

Belgravia Historical Walk

Tel 053 839 2712
Email: vida@museumsonc.co.za
Web: www.museumsonc.co.za

Big Hole, Diamonds and Destiny

West Circular Road
Tel 053 830 4425
Web: www.thebighole.co.za

Birdwatching

Mark Anderson Tel 053 832 2143
Email: manderson@grand.ncape.gov.za
Andries Mokgele Tel 053 807 7372

Canteen Koppie

R31 between Kimberley and Barkly West
Tel 053 531 0671
Cell 082 222 4777
Web: www.museumsonc.co.za

Cape Corps Memorial

Du Toitspan Road

Cape Police Memorial

c/o Lodge & Rendlesham Roads

Cenotaph Memorial

Cnr Lennox & Du Toitspan Road

City Hall

Cnr Old Main Road & Transvaal Road
Tel 053 830 6226

Concentration Camp Memorial

Hertzog Square, Long Street

Conference Facilities

Tel 053 832 7298
Web: www.kbymun.org.za

De Beers Head Office

Stockdale Street
Tel 053 839 4111
Email: cindy.carls@debeersgroup.com

Diggers' Fountain

Jan Smuts Boulevard

Driekopseiland Rock Engravings

Kimberley-Douglas Road, turn off at Plooyburg sign.
Cell 082 222 4777
Email: dmorris@museumsonc.co.za
Web: www.driekopseiland.itgo.com

Duggan-Cronin Gallery

Egerton Road Tel 053 839 2743
Email: photos@museumsonc.co.za
Web: www.museumsonc.co.za

Dunluce

Tel 053 831 2924 or 053 839 2700
Email: photos@museumsonc.co.za
Web: www.museumsonc.co.za

Dutch Reformed Church

Hertzog Square, Long Street
Tel 053 832 2511

Flamingo Casino

Operated by Sun International
Tel 053 830 2600

Flora, Plant Life of the Province

Tel 053 839 2713
Email: kmgbot@museumsonc.co.za
Web: www.museumsonc.co.za

Fly-Fishing

Tel 053 832 7298
Email: tourism@kbymun.org.za

Freddie Tait Golf Museum

N12 (Kimberley to Johannesburg) at the
Kimberley Golf Club
Tel 053 841 0127

General Ken van der Spuy Memorial

Pioneers of Aviation Museum
Oliver Road, to Kimberley Airport
Tel 053 851 1197



Magersfontein Memorial Golf Estate



The Tram in the Big Hole's old town

Ghost Trail

Tel 053 832 7298

Email: tourism@kbymun.org.za

Halfway House Historical Pub

Du Toitspan Road

Tel 053 831 6324

Email: halfwayhouse@intekom.co.za

Honoured Dead Memorial

Dalham, Memorial & Oliver Roads

Tel 053 839 2700

Horse Racing

Grigqualand West Race Track

Road to Bloemfontein via Boshof

Tel 053 843 0014

Historic Graves

West End Cemetery, Green Street

Tel 053 861 4568

Kamfers Dam

Rancher Booth

N12 (Kimberley to Johannesburg)

Tel 053 873 3591

Kimberley Africana Library

63-65 Du Toitspan Road

Tel 053 830 6247

Kimberley Club

Du Toitspan Road

Tel 053 832 4224

Kimberley Golf Course

N12 (Kimberley to Johannesburg)

Tel 053 841 0179

Kimberley North Walk

Tel 053 831 5072

Cell 083 732 3189

Magersfontein Anglo-Boer War Museum

Tel 053 833 7115 or 053 839 2735

Email: sunet@museumsnc.co.za

Web: www.museumsnc.co.za

Magersfontein Memorial Golf Estate

Tel 053 580 2000

Email: golfimmgc@mweb.co.za

Malay Camp Memorial

Tel 053 839 2700

McGregor Museum

5 Atlas Street, Belgravia

Tel 053 839 2700

Tour bookings: 053 839 2717

Web: www.museumsnc.co.za

Mokala National Park

Turn-off the N12 (Cape Town road)

80km south of Kimberley

Tel 053 204 8000/1/2

Web: www.sanparks.org

Noitgedacht Glacial Pavements

R31 between Kimberley and Barkly West

Tel 053 839 2700 or 053 839 2732

Cell 082 222 4777

Email: dmorris@museumnc.co.za

Web: www.museumsnc.co.za

Old De Beers Board Room

Warren Street

Oppenheimer Memorial Gardens

Jan Smuts Boulevard

Tel 053 839 2700

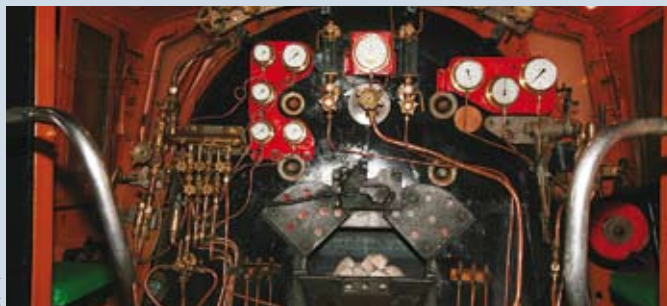
Paardeberg Battlefield

Tel 053 839 2700

Web: www.museumsnc.co.za



© Steve Newbould



© Steve Newbould

A steam locomotive cabin in the Transport Museum

Pioneers of Aviation Museum

Oliver Road, past turn off to Airport
Tel 053 839 2700
Web: www.museumsnsc.co.za

Rhodes Statue

Du Toitspan Rd

River Rafting

Tel 053 832 7298
Email: tourism@kbymun.org.za

Riverton & Langleg Resort

N12 (Kimberley to Johannesburg)
Tel 053 832 1703

Robert Sobukwe House and Law Office

Galeshewe

Rock Art

Tel 053 839 2732 or 053 833 3437
Email: dmorris@museumsnsc.co.za
Web: www.museumsnsc.co.za

Rudd House

Tel 053 839 2700
Email: vida@museumsnsc.co.za
Web: www.museumsnsc.co.za

Seventh Day Adventist Church

Cnr Blacking Street & Dyer Place
Tel 053 830 6911

Sister Henrietta Stockdale Statue

St Cyprian's Cathedral, Du Toitspan Road
Tel 053 833 3437 Cell 082 222 4777

Sol Plaatje House

Angel Street Tel 053 830 6911
Web: www.museumnc.co.za

Sol Plaatje's Grave

West End Cemetery, Green Street
Tel 053 830 6911

Square Hill Memorial

Cnr Lennox & Du Toitspan Road
Tel 083 657 6411

Steam Locomotives

Austin Road, Beaconsfield Marshalling Yard
Tel 053 838 3131

Star of the West Historical Pub

North Circular Road
Tel 053 832 6463
Email: star@kimberley.co.za

St Cyprian's Cathedral

Du Toitspan Road
Tel 053 833 3437
Cell 082 222 4777

Synagogue

Memorial Road

Township Wonders Tour

Tel 053 832 7298
Web: www.museumsnsc.co.za

Tram

Tel 053 832 7298
Email: tourism@solplaatje.org.za

Transport Museum

Platform 1, Kimberley Station, Florence Road
Tel 053 838 2237
Email: carien.viljoen@transnet.co.za

Wildebeest Kuil Rock Art Centre

Barkly West Road
Tel 053 833 7069
Cell 082 222 4777
Email: dmorris@museumsnsc.co.za
Web: www.wildebeestkuil.itgo.com

William Humphreys Art Gallery

Cullinan Road
Tel 053 831 1724